

Female Sale 2018



Nebraska

Platinum
Standard

SUNDAY
December 9th
12:00 NOON • BEATRICE, NEBRASKA

Trauernicht Simmentals

Welcome to our 8th Annual Sale!

**BRED FEMALES • FANCY OPEN HEIFERS
COW/CALF PAIRS • HERD BULL PROSPECTS**

We would like to extend the warmest of invitations to you to attend our Nebraska Platinum Standard Female Sale. We couldn't be more proud of our genetics in terms of what they have done for us and you, our valued customer. One bright spot this fall has been the strength of the feeder cattle market. I really feel that now is a great opportunity to make some money. No other breed does it better than the cross between Simmental and Angus. If you are thinking you should expand or are trying to improve your genetics, my recommendation is that now is the time to dive in, while you can get paid well for your end product.

This year's offering of bred females is as deep as we have ever offered! They fit our motto well... "performance cattle with a touch of style." The good news is that it doesn't stop there! These cattle are also bred for calving ease, maternal traits, fertility, and have a tremendous set of EPD's backing them. In this offering there are purebred Simmental and Angus, as well as Sim-Angus...red and black alike. Take a serious look at this group of outstanding females. Help yourself and see what 47 years of dedicated breeding can do for your program!

Today's world is busy and everyone needs efficiency, as time is money. Our current cow herd is bred to calve easy, have solid udders, and breed back easily. It is important to us to produce low input, high efficiency cattle. Why? Because it is not just a choice, it's the only way to survive in today's world! As we continue to evolve and change with the times, one thing stands true...Trauernicht Simmentals was built on a handshake, and that, my friends, will not change! We will continue to work with our loyal customers to provide an offering that is right for the times. Once again, thank you for your interest in our program – don't hesitate to contact us with questions or let us know how we can be of assistance!

Thanks for your continued support!

BID ONLINE AT
LiveAuctionsTV
For more information, call
our support team 817-725-8595

Sincerely,

Loren & Scott





December 9th

Nebraska Platinum Standard Female Sale

Sale Schedule

Saturday, December 8th.....Viewing of Sale Cattle
Sunday, December 9th
 11:00 AM..... Complimentary Lunch
 12:00 Noon NE Platinum Standard Female Sale

SALE LOCATION:

Beatrice 77 Livestock, 3320 North 6th Street, Beatrice, NE

AIRPORTS: Lincoln Airport Gate 1, Lincoln, NE (40 miles from sale site). Serviced by Delta and United. Car rentals include Avis, Budget, Hertz, National, Alamo and Enterprise.

MOTEL HEADQUARTERS: Holiday Inn Express, 4005 N 6th, Beatrice, NE 402-228-7000

TERMS & CONDITIONS: All cattle sell under the Terms & Conditions of the American Simmental Association & the American Angus Association. Terms available sale day.

EPDS: EPDs listed are Fall 2018 numbers (11-6-18). Please note, EPDs may change from the time sale catalog is printed until registration papers are transferred.

ANNOUNCEMENTS: Announcements made sale day and from the auction block during the sale take precedence over printed material associated with this sale. Anyone attending this sale attends at their own risk. Breeders or any of the sales force will not be held responsible for any personal injury for attending this sale.

UPDATES & SALE ORDER: Additional information and sale order can be found on the Eberspacher Enterprises Inc. **Facebook** page. Like us and receive the updates automatically. Download the EE smart phone app for all up-to-date sale information. Checks are payable to Eberspacher Ent.

LIVESTOCK INSURANCE: Insurance will be available sale day through sale management and Jame Secondino of American Livestock Insurance, 812-208-0956.

AUCTIONEER: Col. Tracy Harl.....402-469-3852

MARKETING REPRESENTATIVES:

Val Eberspacher, EE Sales.....612-805-7405
 Derek Vogt, EE Sales308-750-5216
 Chris Beutler, Lee AgriMedia402-380-8244
 Dennis Henrichs.....402-239-8741
 Randy Rasby308-539-6195

- All bred females have been pregnancy examined by a licensed veterinarian and to the best of his ability have determined pregnancy confirmation.
- Sexed heifer semen does not guarantee 100% heifer calf.
- Retained Flush: Trauernicht and guest breeders retain the right in the future to flush any female selling in the 2018 Nebraska Platinum Standard Sale at buyer's convenience and seller's expense.
- Retaining 1/3 semen interest in all bulls selling.

Sale Day Phone Numbers

Loren 402-230-0812 • Scott T 402-239-1272

Val 612-805-7405

Jim 402-239-0843 • Chris N 402-520-2962

Sale Barn 402-223-3571

Guest Consignors

State Line Farm Simmentals 402-239-0843 • Neumann Farms 402-520-2962



www.trauernichtsimmentals.com
 Loren 402-645-8306 or 402-230-0812

Scott 402-239-1272

516 E Pine Road

Wymore, NE 68466

Darrin Minge, Livestock Specialist
 785-747-7422



SALE MANAGERS:
EBERSPACHER ENT. INC.

Office 507-532-6694
 Val Cell 612-805-7405
 sales@ebersale.com
 www.ebersale.com

LOT
1

LHT Ms. Order 143F

Black Baldy Dbl Polled 5/8 SM 3/8 AN
ASA#3426181 BD: 3-22-18 Tattoo: 143F
Adj BW: 75 Adj WW: N/A

W/C Executive Order 8543B

LHT Sweetheart 85D

W/C United 956Y

Miss Werning KP 8543U

W/C Lock Down 206Z

LHT Ms. Voltage 11

This baldy heifer is one that we think very highly of, and we're not alone. She was Reserve Division at the Nebraska State Fair and in the top ten of the feeder calf jackpot at the State Fair. Not only that, but she was also Grand Champion Commercial Feeder Calf at the Gage County Fair. This heifer's extremely long neck and super deep body have caught the attention of many. Not only will this one make a show heifer, but an excellent donor prospect as well.

CE	14	DOC	12.1
BW	-1.4	CW	34.5
WW	74	YG	-.26
YW	114	Marb	.25
ADG	.25	BF	-.047
MCE	7	REA	.76
Milk	24	API	131
MWW	61	TI	77
Stay	14		



W/C Executive Order 8543B, Sire

LOT
2

LHT Ms. Order 140F

Red Dbl Polled Purebred
ASA#3401640 BD: 2-26-18 Tattoo: 140F
Adj BW: 84 Adj WW: N/A

W/C Executive Order 8543B

LHT Ms. Upper Class 175D

W/C United 956Y

Miss Werning KP 8543U

Sandeen Upper Class 2386

Lazy H Miss Remington

This heifer adds another generation to prove the longevity of the Remington cow family. She was the Reserve Grand Champion Feeder Calf at the Gage County Fair and stood next the the top heifer in class at the Nebraska State Fair. This brood cow is one that will not disappoint on the production side of things, either. She is super big boned and extremely deep bodied...the makings of a bull producing machine.

CE	12	DOC	9.2
BW	.3	CW	26.5
WW	70	YG	-.44
YW	106	Marb	.10
ADG	.22	BF	-.091
MCE	4	REA	.90
Milk	24	API	126
MWW	59	TI	73
Stay	14		



Lazy H Miss Remington, Grandam

LOT
3

LHT Ms. Loaded Up 123F

Black Homo Polled Purebred
 ASA#3426180 BD: 2-20-18 Tattoo: 123F
 Adj BW: 84 ET Adj WW: N/A

W/C Loaded Up 1119Y

BWL Ginger 930Y

Remington Lock N Load 54U
 Aubreys Black Blaze III
 SVF Steel Force S701
 J&C/SS Bernadette



This cow family never disappoints. Ginger has done it again with this extremely good fronted, thick-made female. She was the Grand Champion Feeder Calf at the Gage County Fair and stood in the top of her class at the Nebraska State Fair. This elegant heifer caught our eye at birth, and has continued to do so her entire life.

CE	12	DOC	10.3
BW	1.0	CW	21.1
WW	62	YG	-.58
YW	89	Marb	-.15
ADG	.17	BF	-124
MCE	6	REA	1.00
Milk	21	API	118
MWW	52	TI	62
Stay	19		



BWL Ginger 930Y, Dam

LOT
4

LHT Ms. Order 81F

Black Baldy Homo Polled 5/8 SM 3/8 AN
 ASA#3426182 BD: 2-20-18 Tattoo: 81F
 Adj BW: 85 Adj WW: N/A

W/C Executive Order 8543B

LHT Ms. Lock N Load 139D

W/C United 956Y
 Miss Werning KP 8543U
 Remington Lock N Load 54U
 LHT Ms. Hot Rod 145T



Here is a baldy heifer that has so many good pieces. Her swooping rib cage, perfectly set rear legs and elegant front end give her a look that not many have. With that being said, she still has some substance behind her. This heifer is one that will work in a multitude of operations.

CE	13	DOC	11.1
BW	-.2	CW	31.9
WW	71	YG	-.28
YW	118	Marb	.26
ADG	.29	BF	-.051
MCE	6	REA	.75
Milk	24	API	132
MWW	59	TI	75
Stay	16		



W/C Executive Order 8543B, Sire



LOT 5

LHT Ms. Executive 77F

Black Dbl Polled Purebred • ASA#3489176
BD: 2-13-18 • Tattoo: 77F • Adj BW: 80 ET • Adj WW: N/A

W/C Executive Order 8543B

W/C United 956Y

WWS Antoinette 22B

Miss Werning KP 8543U
JF Milestone 999W
CNS-HFS Antoinette X403

Here is a long spined, extremely good fronted heifer that is still quite stout. Her many good parts make a super versatile female that can definitely compete in the show ring, while still being able to produce good, sound, functional offspring.

CE	13	DOC	12.1
BW	-5	CW	33.3
WW	72	YG	-.40
YW	113	Marb	.13
ADG	.25	BF	-.090
MCE	7	REA	.88
Milk	24	API	125
MWW	60	TI	76
Stay	11		



WWS Antoinette 22B, Dam



LOT 6

JZ Ms. Liberty 03F

Black Dbl Polled 3/4 SM 1/4 AN
ASA#3380448 BD: 2-19-18 Tattoo: 03F
Adj BW: 84 Adj WW: 616

W/C Lock Down 206Z

Remington Lock N Load 54U

JZ Ms. Lilly 08D

G C F Miss New Level R206
STF Shocking Dream SJ14
OBCC Foolin U P01W

Guest Breeder:
State Line Farm Simmentals

03F is solid black heifer out of Shocking Dream daughter that we really like. Sired by W/C Lock Down bull, this heifer has the genetics and the balanced set of EPD's to make a very good cow.

CE	11	DOC	12.7
BW	.9	CW	36.9
WW	72	YG	-.24
YW	111	Marb	.21
ADG	.25	BF	-.046
MCE	6	REA	.74
Milk	20	API	124
MWW	56	TI	72
Stay	16		



LOT 7

LHT Ms. Executive 254F

Black Dbl Polled 3/4 SM 1/4 AN • ASA#3489263
BD: 5-3-18 • Tattoo: 254F • Adj BW: 72 • Adj WW: N/A

W/C Executive Order 8543B

W/C United 956Y

HCCO Countess 148C

Miss Werning KP 8543U
Mr. TR Hammer 308A ET
SJF Countess 148Y

This heifer may be a little younger than the other opens, but she sure doesn't disappoint. She is extremely feminine in her front one third and super long bodied. When you look on paper, she doesn't disappoint there either being in the top 25 percentile of calving ease, weaning weight, and yearling weight and the top 15 percentile in birth weight.

CE	14	DOC	10.9
BW	-1.4	CW	34.0
WW	73	YG	-.34
YW	112	Marb	.23
ADG	.25	BF	-.071
MCE	6	REA	.85
Milk	23	API	124
MWW	60	TI	76
Stay	11		

BID ONLINE AT
LiveAuctions.TV

LOT
8

LHT Ms. Executive 183F

Black Polled Purebred • ASA#3489219
BD: 3-12-18 • Tattoo: 183F
Adj BW: 80 • Adj WW: N/A

W/C Executive Order 8543B

BF Miss In Black N White

W/C United 956Y

Miss Werning KP 8543U

SVF Steel Force S701

BF Ms. Toolman K12



This blaze face female is one that will make a very nice show heifer, but an even better cow. This super stout made heifer goes back to a Steel Force cow we bought from Bill Fulton, so there is proof in the pedigree.

CE	13	DOC	8.6
BW	-.9	CW	23.6
WW	66	YG	-.41
YW	97	Marb	.05
ADG	.19	BF	-.082
MCE	6	REA	.85
Milk	24	API	116
MWW	56	TI	71
Stay	10		

LOT
9

JZ Ms. Omaha 11E

Black Dbl Polled 3/4 SM 1/4 AN
ASA#3309081 BD: 9-2-17 Tattoo: 11E
Adj BW: 77 Adj WW: 657

TLLC One Eyed Jack

JZ Ms. Lissy 01U

Long's Shear Pleasure

Long's Miss Sweet Treat

B C Lookout 7024

JZ Ms. Mariah 01S



Guest Breeder:

State Line Farm Simmentals

This solid black heifer is deep bodied, soft made with lots of rib. Her dam out of BC Lookout has been consistent in producing a good calf every year. Her sire, One Eyed Jack has been producing very eye appealing progeny that have been selling well. Make sure to take a look at her sale day, you need to see her to appreciate how deep she is.

CE	11	DOC	7.7
BW	..4	CW	21.4
WW	55	YG	-.31
YW	81	Marb	.12
ADG	.16	BF	-.060
MCE	3	REA	.66
Milk	19	API	105
MWW	47	TI	60
Stay	12		

LOT 10

LHT Ms. Cowboy Cut 37E

Black Dbl Polled
3/4 SM 1/4 AN
 ASA#3315674 BD: 1-4-17 Tattoo: 37E
 Adj BW: 79 Adj WW: 573

CCR Cowboy Cut 5048Z
LHT Ms. Emblazon 304W

Triple C Singeltary S3H
CCR Ms. 4045 Time 7322T
O C C Emblazon 854E
LHT Ms. Blackfoot 177G

A.I. Sire: W/C Executive 187D (4-9-18) • Due: 1-15-19
 EPDs: 14 .3 69 100 .19 7 25 60 16 13.9
 Carcass: 34.05 -.27 .26 -.06 .69 130 72



An exceptional female that goes back to the tremendous 177G cow. This super deep bodied heifer has a proven pedigree over many generations. Her practically perfect skeleton will set the foundation for a multitude of breeding options to create any type of cattle you desire. With a stout made heifer like this, she might find her way into a donor pen.

CE	13	DOC	14.6
BW	1.0	CW	26.6
WW	64	YG	-.24
YW	87	Marb	.27
ADG	-.14	BF	-.048
MCE	6	REA	.59
Milk	26	API	130
MWW	58	TI	68
Stay	20		



W/C Executive187D, AI Sire

LOT 11

LHT Ms. Top Ten 08E

Black Baldy Dbl Polled
5/8 SM 3/8 AN
 ASA#3315646
 BD: 1-1-17
 Tattoo: 08E
 Adj BW: 81 Adj WW: 606

LRS Top Ten 104A

A A R Ten X 7008 S A

LHT Ms. Upgrade 94B

LRS Ms. Surebet 104Y

Mr. NLC Upgrade U8676

LHT Ms. Magnitude 77S

A.I. Sire: Hook's Encore 65E (4-14-18) • Due: 1-20-19
 EPDs: 15 -1.05 66 101 .22 8 24 57 17 14.0
 Carcass: 24.3 -.41 .37 -.06 .99 141 76



This baldy female has been a farm favorite. She is a moderate framed, thick made female that will make an awesome cow. To top it off, she comes from a very outstanding cow family.



Hook's Encore 65E, AI Sire

CE	12	DOC	11.0
BW	.3	CW	36.7
WW	72	YG	-.24
YW	112	Marb	.23
ADG	.25	BF	-.056
MCE	5	REA	.67
Milk	19	API	126
MWW	55	TI	72
Stay	16		

LOT 12

LHT Ms. Stanta Fe 23E

Black Dbl Polled
3/4 SM 1/4 AN
 ASA#3315661
 BD: 1-2-17
 Tattoo: 23E
 Adj BW: 85 Adj WW: 693

CCR Santa Fe 9349Z

S D S Graduate 006X

LHT Ms. Joker 100A

CCR Ms. Apple 9332W

PVF-BF BF26 Black Joker

LHT Ms. Legend 23U

A.I. Sire: Hook's Encore 65E (5-10-18) • Due: 2-16-19
 EPDs: 12 .05 71 102 .20 8 25 61 19 13.8
 Carcass: 19.45 -.41 .22 -.06 .95 143 77



This stout made Santa Fe heifer is one I would really love to keep. I think she could lay down and have a tremendous calf...one that will surely be an outstanding individual. We are very excited to see the first Encore calves.



Hook's Encore 65E, AI Sire

CE	8	DOC	10.7
BW	1.8	CW	23.7
WW	73	YG	-.35
YW	103	Marb	-.08
ADG	.19	BF	-.061
MCE	4	REA	.81
Milk	24	API	114
MWW	61	TI	67
Stay	18		

**LOT
13**

LHT Ms. Cowboy Cut 53E

Black Dbl Polled
1/2 SM 1/4 AN
ASA#3315689 BD: 1-7-17 Tattoo: 53E
Adj BW: 87 Adj WW: 718

CCR Cowboy Cut 5048Z
LHT Ms. Bismark 25Y

Triple C Singeltary S3H
CCR Ms. 4045 Time 7322T
S A V Bismark 5682
265U

A.I. Sire: Hook's Beacon 56B (5-15-18) • Due: 2-20-19
EPDs: 16 -6 77 112 .23 10 27 65 18 13.65
Carcass: 26.85 -.34 .54 -.03 1.04 156 86



This heifer, with her super deep body and square hip, has caught our eye ever since she was a calf. She reminds us a lot of her half sib, the high selling bred from the 2017 Female Sale. This heifer could be a great addition to your program, just as her cow family was to ours.

CE	13	DOC	14.4
BW	1.8	CW	28.1
WW	79	YG	-.12
YW	112	Marb	.43
ADG	.21	BF	-.010
MCE	8	REA	.52
Milk	28	API	133
MWW	67	TI	80
Stay	14		



Hook's Beacon 56B, AI Sire



145D, high selling sib from 2017 sale for \$5500

**LOT
14**

LHT Ms. Prime Time 27E

Red Dbl Polled
3/4 SM 1/4 AR
ASA#3315664
BD: 1-2-17
Tattoo: 27E
Adj BW: 81 Adj WW: 586

WS Prime Time B6

WS Prime Beef Z8
WS Majestic Z133
BFCK Cherokee Cynn 4912
LHT Ms. Reality 42N

A.I. Sire: H2R Profitbuilder B403 (4-15-18) • Due: 1-21-18
EPDs: 11 -1.05 76 120 .28 4 19 57 16 12.65
Carcass: 32.7 -.03 .46 -.01 .32 136 79

This is a heifer that we are confident will go on and do great things. Her dam has raised many sale topping bulls and heifers and we predict she will do the same.

CE	11	DOC	10.7
BW	.6	CW	37.6
WW	71	YG	-.33
YW	113	Marb	.10
ADG	.26	BF	-.075
MCE	3	REA	.82
Milk	25	API	123
MWW	61	TI	70
Stay	18		

H2R Profitbuilder B403, AI Sire



**LOT
15**

LHT Ms. Believe 35E

Black Horned
Purebred
ASA#3315671
BD: 1-4-17
Tattoo: 35E
Adj BW: 85 Adj WW: 497

LLSF Pays To Believe ZU194

CNS Pays To Dream T759
LLSF Ura Babydoll U194
GWS Ebony's Trademark 6N
RBS P405

A.I. Sire: W/C Executive Order 8543B (4-2-18) • Due: 1-8-19
EPDs: 12 -.05 68 101 .21 5 20 54 10 11.15
Carcass: 31.8 -.34 .21 -.07 .83 124 74

This Pays To Believe heifer is a super sound structured female. Her good front end and swooping rib cage give her a rare elegance that will produce some very attractive offspring.

CE	10	DOC	10.1
BW	2.2	CW	29.1
WW	59	YG	-.32
YW	81	Marb	.20
ADG	.14	BF	-.066
MCE	4	REA	.74
Milk	14	API	110
MWW	44	TI	64
Stay	10		



W/C Executive Order 8543B, AI Sire



**LOT
16**

LHT Ms. Intergrate 42E

Black Dbl Polled Purebred
ASA#3315679 BD: 1-5-17 Tattoo: 42E
Adj BW: 82 Adj WW: 783

GLS Integrate Z3

LHT Ms. Ranchhand 47W

Mr. NLC Upgrade U8676
GLS Miss BTE W149
Sand Ranch Hand
RKS Ms. Lucky Buck M51

A.I. Sire: Hook's Beacon 56B (5-17-18) • Due: 2-22-19
EPDs: 15 -.45 84 130 .29 10 24 66 19 13.0
Carcass: 35.5 -.55 .32 -.09 1.33 160 89



Here is a heifer that brings some look to a very good EPD profile. Being in the top 1% in weaning weight, yearling weight, and average daily gain, this female is a growing machine.

CE	12	DOC	13.1
BW	2.1	CW	45.4
WW	93	YG	-.55
YW	147	Marb	-.01
ADG	.33	BF	-.137
MCE	8	REA	1.11
Milk	22	API	130
MWW	69	TI	83
Stay	15		



Hook's Beacon 56B, AI Sire



**LOT
17**

LHT Ms. Cow Boy 58E

Black Dbl Polled
3/4 SM 1/4 AN
ASA#3315695
BD: 1-8-17
Tattoo: 58E
Adj BW: 84 Adj WW: 649

CCR Cowboy Cut 5048Z

Triple C Singeltary 53H

LHT Ms. Lookout 18W

CCR Ms. 4045 Time 7322T

B C Lookout 7024

LHT Ms. 600U 234R

A.I. Sire: TJ Diplomat 294D (5-13-18) • Due: 2-18-19
EPDs: 13 -.85 82 118 .23 8 29 70 17 11.5
Carcass: 27.15 -.27 .39 -.04 .71 140 82

CE	12	DOC	14.6
BW	2.0	CW	26.6
WW	78	YG	-.32
YW	107	Marb	.31
ADG	.18	BF	-.059
MCE	6	Milk	.75
Milk	26	MWW	65
MWW	65	API	130
Stay	17	TI	76

Another great daughter of the Cowboy Cut bull. Their performance and looks never seem to disappoint. This long necked, sound structured female leaves no doubt in my mind that she will go out and produce just like her half sib that topped last year's female sale.



TJ Diplomat 294D, AI Sire



**LOT
18**

LHT Ms. Calibre 67E

Black Dbl Polled
1/2 SM 3/8 CS 1/8 AN
ASA#3315703
BD: 1-10-17
Tattoo: 67E
Adj BW: 76 Adj WW: 724

TJ High Calibre 556B

MCM Top Grade 018X

148C

PRS Lady Done Right W214

MCM Top Grade 018X

LHT Ms. Superior 33Y

A.I. Sire: JSAR Kansas (5-5-18) • Due: 2-10-19
EPDs: 16 -2.65 79 120 .26 10 27 66 12 10.3
Carcass: 39.65 -.20 .41 -.04 .70 134 84

CE	11	DOC	11.3
BW	.6	CW	32.6
WW	79	YG	-.46
YW	122	Marb	.22
ADG	.27	BF	-.113
MCE	7	REA	.85
Milk	29	MWW	69
MWW	69	API	130
Stay	17	TI	78

Here is a female that is sure to put some growth in her calves. Being in the top 10% for both weaning and yearling weight, she will pay for herself with those extra pounds and in a good looking package.



JSAR Kansas, AI Sire

**LOT
19**

LHT Ms. Lock Down 62E

Black Baldy Dbl Polled
1/2 SM 3/8 AN 1/8 MX
ASA#3315698 BD: 1-8-17 Tattoo: 62E
Adj BW: 76 Adj WW: 646

W/C Lock Down 206Z

LHT Ms. Combination 23Z

Remington Lock N Load 54U
G C F Miss New Level R206
GLS Combination R2
LHT Ms. Luckyman 100U

A.I. Sire: TJ Franchise 451D (4-13-18) • Due: 1-19-19
EPDs: 17 -.9 78 119 .26 10 24 63 17 12.9
Carcass: 39.45 -.09 .46 -.01 .58 152 84



This super long bodied heifer is one that will surely make a great cow. Going back to a sire like Lock N Load, you know her genetics are proven. This heifer will definitely bring plenty of growth to your program with weaning weight in the top 20 percentile, yearling weight in the top 10 percentile and average daily gain in the top 4 percentile.

CE	13	DOC	12.6
BW	-.2	CW	45.8
WW	73	YG	-.10
YW	120	Marb	.33
ADG	.29	BF	-.015
MCE	8	REA	.66
Milk	26	API	139
MWW	63	TI	77
Stay	18		



TJ Franchise 451D, AI Sire

**LOT
20**

LHT Ms. E O 68E

Black Dbl Polled
3/8 SM 3/8 AN 1/4 CS
ASA#3315704
BD: 1-10-17
Tattoo: 68E
Adj BW: 78 Adj WW: 625

W/C Executive Order 8543B

LHT Ms. Tiger 48Z

W/C United 956Y
Miss Werning KP 8543U
HF Tiger 5T
DMF Ms T01Z

A.I. Sire: W/C Lock Down 206Z (4-8-18) • Due: 1-14-19
EPDs: 14 -1.05 74 119 .29 7 26 63 19 12.9
Carcass: 41.65 -.14 .27 -.02 .66 133 75

CE	13	DOC	13.0
BW	-.3	CW	35.4
WW	72	YG	-.23
YW	116	Marb	.20
ADG	.28	BF	-.053
MCE	6	REA	.62
Milk	28	API	129
MWW	64	TI	74
Stay	16		

Executive Order continues to sire some of the best calves in our herd, this being one of them. This heifer has both calving ease and growth, making her an exception to the norm. Combine that with her good structure and the cow family's good milking ability, this one is the complete package.



W/C Lock Down 206Z, AI Sire



**LOT
21**

LHT Ms. Lock Down 79E

Black Dbl Polled
3/4 SM 1/4 AN
ASA#3315714
BD: 1-11-17
Tattoo: 79E
Adj BW: 86 Adj WW: 652

W/C Lock Down 206Z

LHT Ms. Uprising 11C

Remington Lock N Load 54U
G C F Miss New Level R206
LLSF Uprising 29Z5
LHT Ms. Jokers 811T 182P

A.I. Sire: W/C Executive Order 8543B (5-8-18) • Due: 2-13-19
EPDs: 13 -.35 78 122 .28 6 26 64 13 12.7
Carcass: 34.9 -.34 .16 -.06 .89 122 76

CE	10	DOC	13.2
BW	1.6	CW	35.2
WW	77	YG	-.32
YW	122	Marb	.10
ADG	.28	BF	-.061
MCE	6	REA	.85
Milk	25	API	117
MWW	64	TI	72
Stay	16		

They don't make them any longer fronted and cleaner fronted than this one! Top that off with her big square hip, and I think this female definitely has a bright of a future.



W/C Executive Order 8543B, AI Sire



**LOT
22**

LHT Ms. Renown 75E

Black Dbl Polled
1/2 SM 1/2 AN
ASA#3315710 BD: 1-11-17 Tattoo: 75E
Adj BW: 86 Adj WW: 726

S A V Renown 3439
LHT Mr. Black Bear 24X

Rito 707 Of Ideal 3407 7075
S A V Blackcap May 4136
MRL Black Bear 795
LHT Ms. Destiny 80M

A.I. Sire: Koch Big Timber 685D (4-13-18) • Due: 1-19-19
EPDs: 15 -.95 .80 120 .25 8 19 59 18 10.35
Carcass: 31.55 -.22 .24 -.04 .69 140 79



This big stout Renown heifer is one that I really appreciate. She will make a tremendous cow. Her cow family has historically had some of our top sale highlights.

CE	8	DOC	12.7
BW	2.6	CW	39.9
WW	83	YG	-.10
YW	128	Marb	.18
ADG	.28	BF	-.014
MCE	3	REA	.62
Milk	14	API	118
MWW	56	TI	73
Stay	16		



Koch Big Timber 685D, AI Sire



**LOT
23**

LHT Ms. Renown 91E

Black Dbl Polled
1/2 SM 1/2 AN
ASA#3315725
BD: 1-13-17
Tattoo: 91E

Adj BW: 81 Adj WW: 696

CE	9	DOC	12.7
BW	1.5	CW	41.3
WW	79	YG	-.09
YW	123	Marb	.26
ADG	.28	BF	-.013
MCE	4	REA	.59
Milk	18	API	124
MWW	57	TI	75
Stay	16		

S A V Renown 3439
LHT Ms. Manifest 28Z
Rito 707 Of Ideal 3407 7075
S A V Blackcap May 4136
Nichols Manifest T79
LHT Ms. 600U 277T

A.I. Sire: TJ Franchise 451D (4-19-18) • Due: 1-26-19
EPDs: 15 -.05 81 121 .25 8 19 60 16 12.95
Carcass: 37.2 -.08 .43 -.01 .55 145 83

Bigger framed power heifer here! I would be shocked if this female doesn't raise one of the biggest calves every year for her new owner.



TJ Franchise 451D, AI Sire



**LOT
24**

LHT Ms. Top Grade 99E

Black Dbl Polled
5/8 SM 3/8 AN
ASA#3315733
BD: 1-15-17
Tattoo: 99E

Adj BW: 77 Adj WW: 541

CE	12	DOC	10.2
BW	-.2	CW	33.9
WW	61	YG	-.29
YW	100	Marb	.39
ADG	.24	BF	-.075
MCE	8	REA	.64
Milk	30	API	136
MWW	60	TI	72
Stay	17		

MCM Top Grade 018X
LHT Ms. Upward 151B
Mr. NLC Upgrade U8676
MCM 513R
Sitz Upward 307R
LHT Ms. Macho 74U

A.I. Sire: Koch Big Timber 685D (4-30-18) • Due: 2-5-19
EPDs: 17 -.235 69 106 .23 11 27 62 19 9.1
Carcass: 28.55 -.32 .34 -.07 .70 148 78

Here is a heifer made to produce stout made, rugged bulls. You can't help but like how stout hipped this one is.



Koch Big Timber 685D, AI Sire

LOT 25

LHT Ms. Lock Down 76E

Black Dbl Polled
3/4 SM 1/4 AN
 ASA#3315711 BD: 1-11-17 Tattoo: 76E
 Adj BW: 81 Adj WW: 686

W/C Lock Down 206Z **Remington Lock N Load 54U**
LHT Ms. Voltage 76C **G C F Miss New Level R206**
LHT Ms. Confidence 237Z **SS/PRS High Voltage 244X**

A.I. Sire: Hook's Beacon 56B (5-12-18) • Due: 2-17-19
 EPDs: 15 -1.3 785 113 .24 9 24 61 18 12.55
 Carcass: 29.4 -.38 .42 -.05 1.11 161 86



These Lock Down heifers are making very good cows. We calved out the first ones this past year and they proved themselves by weaning off some of the biggest calves.

CE	13	DOC	12.2
BW	.4	CW	33.2
WW	76	YG	-.21
YW	113	Marb	.19
ADG	.23	BF	-.041
MCE	7	REA	.66
Milk	21	API	123
MWW	59	TI	74
Stay	15		



Hook's Beacon 56B, AI Sire

LOT 26

LHT Ms. Prime Time 106E

Red Dbl Polled
3/4 SM 1/4 AR
 ASA#3315740
 BD: 1-16-17
 Tattoo: 106E
 Adj BW: 79 Adj WW: 618

WS Prime Time B6 **WS Prime Beef Z8**
LHT Ms. Conquest 94X **WS Majestic Z133**
HXC Conquest 4405P
LHT Ms. Too Red 45N

A.I. Sire: WS All Aboard B80 (4-7-18) • Due: 1-13-19
 EPDs: 14 -.45 82 125 .27 9 20 61 19 12.55
 Carcass: 34.95 -.38 .31 -.09 .80 156 86

The red cattle have been some of the most popular in recent years. This female is the reason why! She is very balanced and complete in her design and has a tremendous set of numbers. Use this female to advance your red program.



WS All Aboard B80, AI Sire



CE	13	DOC	9.6
BW	-.8	CW	20.8
WW	66	YG	-.27
YW	104	Marb	.11
ADG	.24	BF	-.068
MCE	7	REA	.45
Milk	24	API	127
MWW	57	TI	68
Stay	18		

LOT 27

LHT Ms. Ten Speed 124E

Black Dbl Polled
1/2 SM 1/2 AN
 ASA#3315756
 BD: 1-19-17
 Tattoo: 124E
 Adj BW: 77 Adj WW: 661

S A V Ten Speed 302Z **A A R Ten X 7008 S A**
LHT Ms. Top Grade 164C **S A V Madame Pride 1134**
MCM Top Grade 018X
KS Miss Godfather W923

A.I. Sire: Hook's Black Hawk 50B (4-8-18) • Due: 1-14-19
 EPDs: 14 -1.3 74 117 .27 8 23 60 15 12.3
 Carcass: 44.1 -.24 .44 -.03 .92 144 82

Here is a big rugged female that will make a tremendous cow! She ranks in the top 20% of the breed or better in nine different EPDs. True breeding piece here.



Hook's Black Hawk 50B, AI Sire



CE	11	DOC	11.7
BW	-.2	CW	46.4
WW	69	YG	-.20
YW	114	Marb	.59
ADG	.29	BF	-.037
MCE	6	REA	.80
Milk	27	API	139
MWW	62	TI	81
Stay	13		

LOT 28

LHT Ms. Lock Down 131E

Black Baldy Dbl Polled
5/8 SM 3/8 AN
 ASA#3315763 BD: 1-22-17 Tattoo: 131E
 Adj BW: 80 Adj WW: 658

W/C Lock Down 206Z

LHT Ms. Top Grade 25C

Remington Lock N Load 54U
 G C F Miss New Level R206
 MCM Top Grade 018X
 LHT Ms. S Pleasure 15A

A.I. Sire: Hook's Encore 65E (4-13-18) • Due: 1-19-19
 EPDs: 14 -.8 72 110 .24 9 26 62 19 14.1
 Carcass: 25.7 -.34 .42 -.05 .92 148 80



Here's a big baldy female with plenty of chrome that you really have to appreciate. She's one that has enough look to lay down and have your next herd bull or to have a stand out show heifer. Keep track of this female come sale day.

CE	12	DOC	11.3
BW	.1	CW	36.2
WW	75	YG	-.21
YW	118	Marb	.32
ADG	.26	BF	-.034
MCE	7	REA	.74
Milk	26	API	135
MWW	64	TI	77
Stay	17		



Hook's Encore 65E, AI Sire



LOT 29

LHT Ms. Executive 158E

Black Dbl Polled
3/4 SM 1/4 AN
 ASA#3315789
 BD: 1-27-17
 Tattoo: 158E

Adj BW: 76 Adj WW: 556

W/C Executive Order 8543B

LHT Ms. Upgrade 70C

W/C United 956Y
 Miss Werning KP 8543U
 Mr. NLC Upgrade U867E
 LHT Ms. Legend 100T

CE	14	DOC	11.3
BW	-.3	CW	31.8
WW	80	YG	-.39
YW	121	Marb	.19
ADG	.26	BF	-.073
MCE	5	REA	.93
Milk	23	API	130
MWW	62	TI	78
Stay	15		

A.I. Sire: CCR Wide Range 9005A (4-5-18) • Due: 1-11-19
 EPDs: 14 -.10 81 123 .27 7 20 60 16 11.9
 Carcass: 31.7 -.43 .06 -.06 1.16 135 79

This moderate made, massive female has been a stand out since she was a baby! Check out this girl's EPDs. She is truly a breeding piece.



CCR Wide Range 9005A, AI Sire



LOT 30

LHT Ms. United 159E

Black Dbl Polled
5/8 SM 3/8 AN
 ASA#3315790
 BD: 1-28-17
 Tattoo: 159E

Adj BW: 78 Adj WW: 539

W/C United 956Y

LHT Ms. Upgrade 139B

TNT Tuition U238
 Miss Werning 956W
 Mr. NLC Upgrade U867E
 LHT Ms. Legend 22U

CE	13	DOC	9.9
BW	.4	CW	38.2
WW	73	YG	-.24
YW	118	Marb	.30
ADG	.28	BF	-.049
MCE	7	REA	.74
Milk	18	API	125
MWW	54	TI	75
Stay	12		

A.I. Sire: TJ Franchise 451D (4-14-18) • Due: 1-20-19
 EPDs: 17 -.6 78 118 .25 10 19 58 14 11.55
 Carcass: 35.65 -.16 .45 -.03 .62 145 83

You already know this is gonna be a good just looking at her pedigree. How can you go wrong with a United that goes back to a legend like Legend.



TJ Franchise 451D, AI Sire

LOT 31

LHT Ms. Substance 164E

Black Dbl Polled
3/4 SM 1/4 AN
 ASA#3315795 BD: 1-29-17 Tattoo: 164E
 Adj BW: 81 Adj WW: 472

GW-WBF Substance 820Y
LHT Ms. Upgrade 25B

GW Premium Beef 021TS
GW Miss Maternal 558P
Mr. NLC Upgrade U8676
LHT Ms. Top Notch 157Y

A.I. Sire: LHT Mr. Lock Down 36D (4-6-18) • Due: 1-12-19
 EPDs: 15 -.1 64 100 .23 8 22 54 14 14.0
 Carcass: 32.75 -.22 .31 -.05 .58 129 71



Substance has been a household name for the last few years. This one is really good fronted and adequate boned. She is one that continues to get the job done.

CE	12	DOC	15.2
BW	.9	CW	29.9
WW	58	YG	-.39
YW	90	Marb	.33
ADG	.20	BF	-.086
MCE	6	REA	.82
Milk	21	API	124
MWW	50	TI	67
Stay	15		



LHT Mr. Lock Down 36D, AI Sire

LOT 32

LHT Ms. Renown 163E

Black Dbl Polled
1/2 SM 1/2 AN
 ASA#3315794
 BD: 1-29-17
 Tattoo: 163E

Adj BW: 87 Adj WW: 592

S A V Renown 3439

Rito 707 Of Ideal 3407 7075
S A V Blackcap May 4136
GLS New Direction X184
LHT Ms. Jokers 811T 182P

A.I. Sire: Koch Big Timber 685D (4-29-18) • Due: 2-4-19
 EPDs: 15 -1.4 74 112 .24 8 21 58 16 10.5
 Carcass: 28.25 -.27 .17 -.04 .76 131 75

Stout made beautifully contoured female that continues to get it done year after year. Count on her to be a great addition to your herd.



Koch Big Timber 685D, AI Sire



LOT 33

LHT Ms. Intergrate 167E

Black Homo Polled
3/4 SM 1/4 AN
 ASA#3315798
 BD: 1-30-17
 Tattoo: 167E

Adj BW: 72 Adj WW: N/A

GLS Integrate Z3

Mr. NLC Upgrade U8676
GLS Miss BTE W149
S A V Final Answer 0035
LHT Ms. Superior 50Z

A.I. Sire: TJ Franchise 451D (4-14-18) • Due: 1-13-19
 EPDs: 18 -1.25 83 126 .27 11 23 64 16 14.1
 Carcass: 39.1 -.20 .34 -.04 .69 148 84

If you like big numbered cattle, this is one to set your sights on. She has 14 EPD traits in the top 25% or higher in the breed. To top that off, she looks the part and has a tremendous cow family backing her. Possible future donor right here!



TJ Franchise 451D, AI Sire



CE	15	DOC	15.0
BW	-.9	CW	45.1
WW	82	YG	-.33
YW	133	Marb	.08
ADG	.32	BF	-.080
MCE	9	REA	.87
Milk	25	API	130
MWW	66	TI	78
Stay	15		

**LOT
34**

LHT Ms. Top Ten 183E

Black Homo Polled
3/4 SM 1/4 AN
ASA#3315815
BD: 2-8-17 Tattoo: 183E
Adj BW: 81 Adj WW: 573

LRS Top Ten 104A

KS Miss Red Teddy W194

A A R Ten X 7008 S A

LRS Ms. Surebet 104Y

Wheatland Red Teddy 457P

KS Demmi M978

A.I. Sire: Koch Big Timber 685D (4-30-18) • Due: 2-5-19
EPDs: 17 -2.35 68 104 .23 10 24 58 19 9.6
Carcass: 29.15 -.32 .21 -.07 .69 151 78



When talking about cow families, this one moves to the top. She stems back to one of Kenner's top cow families. She is stout made and still has a negative birthweight EPD. This female will be a special addition to anyone's herd.

CE	12	DOC	11.2
BW	-.2	CW	35.1
WW	60	YG	-.29
YW	96	Marb	.13
ADG	.23	BF	-.081
MCE	6	REA	.62
Milk	24	API	119
MWW	53	TI	64
Stay	17		



Koch Big Timber 685D, AI Sire



**LOT
35**

LHT Ms. Santa Fe 188E

Black Dbl Polled
3/4 SM 1/4 AN
ASA#3315818
BD: 2-11-17
Tattoo: 188E
Adj BW: 84 Adj WW: 638

CCR Santa Fe 9349Z

LHT Ms. Upgrade 162C

S D S Graduate 006X

CCR Ms. Apple 9332W

Mr. NLC Upgrade U8676

LHT Ms Top Notch 162C

A.I. Sire: Koch Big Timber 685D (4-21-18) • Due: 1-27-19
EPDs: 16 -1.8 76 110 .22 10 22 60 17 9.65
Carcass: 27.75 -.36 .19 -.07 .83 148 81

CE	10	DOC	11.3
BW	.9	CW	32.3
WW	74	YG	-.37
YW	107	Marb	.08
ADG	.21	BF	-.070
MCE	6	REA	.90
Milk	19	API	123
MWW	56	TI	73
Stay	15		

These Santa Fe daughters look like they are going to be the real deal! They are lower birth weight, but still have enough power to make some tremendous bulls. Stems from a cow family that has been here for over 30 years.



Koch Big Timber 685D, AI Sire



**LOT
36**

LHT Ms. Prime Time 128E

Red Dbl Polled
3/4 SM 1/4 AN
ASA#3315760
BD: 1-20-17
Tattoo: 128E
Adj BW: 79 Adj WW: 703

WS Prime Time B6

LHT Ms. Conquest 191B

WS Prime Beef Z8

WS Majestic Z133

HXC Conquest 4405P

Ankony Ms. Daumes R57

A.I. Sire: Leachman Cadillac L025A (4-8-18) • Due: 1-14-19
EPDs: 13 -1.0 76 120 .28 7 23 61 18 13.25
Carcass: 27.2 -.18 .19 -.04 .49 134 76

CE	13	DOC	9.0
BW	-1.0	CW	26.2
WW	75	YG	-.28
YW	119	Marb	.06
ADG	.28	BF	-.067
MCE	9	REA	.58
Milk	26	API	128
MWW	63	TI	73
Stay	18		

Big time power female with good calving ease right here. This one has the potential to be a future donor. She is a granddaughter of the R57 Red Coat donor that was the start of our red power cows!



Leachman Cadillac L025A, AI Sire

LOT 39

LHT Ms. Calibre 207E

Homo Black
Dbl Polled
Purebred
ASA#3315836

BD: 2-19-17 Tattoo: 207E
Adj BW: 86 Adj WW: 671

TJ High Calibre 556B

LHT Ms. Wide Track 694Y

MCM Top Grade 018X
PRS Lady Done Right W214
W/C Wide Track 694Y
BWL Ginger 930Y

A.I. Sire: JSAR Titan (5-9-18) • Due: 2-14-19
EPDs: 15 -1.55 76 116 .25 9 25 63 12 10.15
Carcass: 44.6 -.19 .33 -.04 .73 128 79



JSAR Titan, AI Sire



Power in the blood here! This female is really good fronted, big ribbed and hiped. I look for her to go on and do big things for her new owner. She is out of a full sib to Making Tracks, one that has done us an excellent job. Take note that she's sired by Herbster's elite Simmental bull, TJ High Calibre. Check out her performance EPDs!

CE	10	DOC	10.8
BW	2.2	CW	34.4
WW	80	YG	-.46
YW	122	Marb	.09
ADG	.26	BF	-.113
MCE	5	REA	.88
Milk	21	API	130
MWW	61	TI	76
Stay	17		



LHT Making Tracks, Full Brother to Dam



BWL Ginger 930Y, Grandam

LOT 40

LHT Ms. Cowboy Cut 201E

Black Dbl Polled
Purebred
ASA#3315830
BD: 2-15-17
Tattoo: 201E

Adj BW: 80 Adj WW: 666

CCR Cowboy Cut 5048Z

LHT Ms. Dandy 108A

Triple C Singeltary S3H
CCR Ms. 4045 Time 7322T
HC Power Drive 88H
WAR Sheza Dandy M751

A.I. Sire: Jindra Acclaim (4-18-18) • Due: 1-24-19
EPDs: 15 .0 87 143 .36 8 29 72 12 11.9
Carcass: 58.75 -.12 .50 -.04 .72 145 90

CE	12	DOC	13.5
BW	2.0	CW	30.8
WW	78	YG	-.40
YW	112	Marb	.14
ADG	.22	BF	-.087
MCE	6	REA	.83
Milk	27	API	129
MWW	66	TI	76
Stay	16		

These Cowboy Cut females just grow on you! They are just so functional, good looking, and high numbered. As an added bonus, you get ones like this one that come from the same cow family that produced Dream On. Great grandam is Sheeza Dandy - one of the breed's great matriarchs.



Jindra Acclaim AI Sire



LOT 41

LHT Ms. United 173E

Black Dbl Polled
1/2 SM 1/2 AN
ASA#3315805
BD: 2-4-17
Tattoo: 173E

Adj BW: 79 Adj WW: 500

W/C United 956Y

LHT Ms. Bismark 90A

TNT Tuition U238
Miss Werning 956W
S A V Bismarck 568Z
LHT Ms. Destiny 59L

A.I. Sire: Hook's Beacon 56B (5-14-18) • Due: 2-19-19
EPDs: 16 -1.6 68 104 .23 10 24 57 18 10.15
Carcass: 26.75 -.34 .48 -.03 1.05 151 80

CE	13	DOC	7.4
BW	-.2	CW	27.9
WW	60	YG	-.13
YW	96	Marb	.32
ADG	.22	BF	-.014
MCE	8	REA	.55
Milk	21	API	123
MWW	51	TI	68
Stay	13		

This United heifer is one that is very hard to fault. Her maternal sister topped this female sale a year ago. This cow family has stood the test of time here at Trauernicht Simmentals. Her offspring surfaces to the top again and again!



Hook's Beacon 56B, AI Sire

LOT 42

LHT Ms. Top Ten 197E

Black Dbl Polled
1/2 SM 1/2 AN
ASA#3315826
BD: 2-14-17
Tattoo: 197E

Adj BW: 69 Adj WW: 527

LRS Top Ten 104A

LHT Ms. Packer 67W

A A R Ten X 7008 S A
LRS Ms. Surebet 104Y
Connealy Packer 547
LHT Ms. Destiny 59L

A.I. Sire: Koch Big Timber 685D (4-13-18) • Due: 1-19-19
EPDs: 18 -3.35 68 102 .21 11 23 57 18 10.25
Carcass: 30.5 -.22 .30 -.04 .63 147 77

CE	15	DOC	12.5
BW	-.2	CW	37.8
WW	59	YG	-.09
YW	91	Marb	.31
ADG	.20	BF	-.019
MCE	8	REA	.50
Milk	21	API	133
MWW	50	TI	69
Stay	16		

Top Ten was one of those bulls we weren't sure about when we first used him, but when we weaned his first calves we were all in! Now that we have seen the first daughters wean their calves, we are even happier. Buy this one with confidence.



Koch Big Timber 685D, AI Sire

LOT 43 208E

**Black Dbl Polled
Purebred**

ASA#(3315837) BD: 2-19-17 Tattoo: 208E
Adj BW: N/A Adj WW: N/A

TJ High Calibre 556B

BWL Right Away 930Z

**MCM Top Grade 018X
PRS Lady Done Right W214
Welsh Dew It Right 067T
J&C/SS Bernadette**

A.I. Sire: JSAR Titan (4-16-18) • Due: 1-23-19
EPDs: 16 -2.45 62 89 .18 10 24 55 10 10.05
Carcass: 39.2 -.18 .29 -.04 .65 137 80



It looks to me like High Calibre is going to sire just like his daddy! The older they get the better they are and this one comes out of an excellent cow that is a maternal sib to Ginger, one of our top donors here.

CE	12	DOC	10.6
BW	.4	CW	23.6
WW	52	YG	-.44
YW	69	Marb	.00
ADG	.11	BF	-.108
MCE	7	REA	.71
Milk	19	API	94
MWW	45	TI	54
Stay	11		



JSAR Titan, AI Sire

LOT 44

LHT Ms. Executive 233E

**Black Dbl Polled
3/4 SM 1/4 AN**

ASA#3315860
BD: 3-3-17

Tattoo: 233E

Adj BW: 84 Adj WW: 578

W/C Executive Order 8543B W/C United 956Y

LHT Ms. Manifest 06Z

Miss Werning KP 8543U

Nichols Manifest T79

LHT Ms. Worth 121W

A.I. Sire: Koch Big Timber 685D (4-30-18) • Due: 2-5-19
EPDs: 17 -2.35 73 111 .24 10 27 63 18 9.55
Carcass: 30.55 -.30 .26 -.06 .75 154 82

Executive Order has done a lot for our program as a female maker. Not only has he has done his part in our herd, but in others, as well. He makes eye appealing and structurally correct cattle that read well on paper. Add it to a power cow family and you get an extremely good individual like this female.



Koch Big Timber 685D, AI Sire



CE	11	DOC	11.1
BW	-.2	CW	37.9
WW	69	YG	-.26
YW	109	Marb	.23
ADG	.25	BF	-.056
MCE	6	REA	.74
Milk	29	API	127
MWW	64	TI	72
Stay	16		



**We look forward to seeing you on December 9th!
Or join us on www.LiveAuctions.tv/**



**LOT
45**

LHT Ms. Up Shot 210E

Black Dbl Polled
1/2 SM 1/2 AN
ASA#3315839
BD: 2-19-17
Tattoo: 210E

Adj BW: 78 ET Adj WW: 668

EXAR Upshot 0562B

LHT Ms. Dream-On 06T

Sitz Upward 307R
EXAR Barbara T020
CNS Dream On L186
LHT Ms. Blackfoot 177G

A.I. Sire: TJ Diplomat 294D (4-14-18) • Due: 1-20-19
EPDs: 13 .15 70 106 .23 8 29 64 17 8.6
Carcass: 27.95 -.24 .39 -.03 .73 138 76



Cherry has produced so many good ones over the years. She continually stamps them with a big square hip. This heifer is no different! I would predict that her Diplomat calf just might give you a big return right away, as this cow family's bulls and females are always sale highlights.

CE	12	DOC	8.8
BW	.6	CW	28.2
WW	55	YG	-.26
YW	83	Marb	.31
ADG	.18	BF	-.032
MCE	7	REA	.80
Milk	26	API	126
MWW	54	TI	64
Stay	17		



TJ Diplomat 294D, AI Sire

**LOT
46**

LHT Ms. Angus 238E

Black Homo Polled
Purebred Angus
ASA#(3315865)
BD: 3-6-17
Tattoo: 238E

Adj BW: 82 Adj WW: 592

CE	15	DOC	11.2
BW	-1.5	CW	8.0
WW	57	YG	.15
YW	83	Marb	.58
ADG	.17	BF	.053
MCE	4	REA	-.06
Milk	15	API	118
MWW	43	TI	61
Stay	14		

NEU Mr. I Am Angus 01B

Duff Angus 011

LHT Ms. Final Answer 232Z

O C C Dixie Erica 919R

S A V Final Answer 0035

LHT Ms. Time Out 304X

A.I. Sire: LHT Mr. Lock Down 36D (4-15-18) • Due: 1-21-19
EPDs: 16 -1.3 63 97 .22 7 19 50 14 12.0
Carcass: 21.8 .06 .44 .02 .14 131 71

This purebred angus heifer is one that catches your attention with her clean lines and square hip. Along with a great look, she is a calving ease deluxe being in the top 10 percentile in calving ease and the top 15 percentile in birth weight.



LHT Mr. Lock Down 36D, AI Sire

**LOT
47**

LHT Ms. Executive 240E

Black Polled
5/8 SM 3/8 AN
ASA#3315867
BD: 3-6-17
Tattoo: 240E

Adj BW: 81 Adj WW: 563

CE	12	DOC	10.9
BW	-.8	CW	32.2
WW	69	YG	-.31
YW	105	Marb	.14
ADG	.22	BF	-.051
MCE	5	REA	.87
Milk	26	API	121
MWW	61	TI	71
Stay	16		

W/C Executive Order 8543B

W/C United 956Y

LHT Ms. Instinct 33X

Miss Werning KP 8543U

Duff Basic Instinct 6501

LHT Ms. Deal 86U

A.I. Sire: Koch Big Timber 685D (5-12-18) • Due: 2-17-19
EPDs: 17 -2.65 73 109 .22 9 25 62 18 9.45
Carcass: 27.7 -.33 .22 -.06 .82 142 78

I really love the way this female is constructed. She has the looks and the numbers to put you in the driver's seat. I would anticipate her Big Timber calf to be something that will make her new owner very proud.



Koch Big Timber 685D, AI Sire



LOT 48

LHT Ms. Top Ten 214E

Black Polled
1/2 SM 1/2 AN
ASA#3315843
BD: 2-23-17 Tattoo: 214E
Adj BW: 85 Adj WW: 687

LRS Top Ten 104A

LHT Ms. Blizzy 01X

A A R Ten X 7008 S A
LRS Ms. Surebet 104Y
3C Macho M450 BZ
KJ Pride 5129

A.I. Sire: W/C Lock Down 206Z (4-9-18) • Due: 1-15-19
EPDs: 12 -.4 72 112 .26 7 23 59 18 11.7
Carcass: 39.3 -.12 -.36 -.02 .62 139 76



Here is a female that should never leave the farm. Her mother always knocks it out of the park. Her maternal sibs have been tremendous. Each bull has been a feature and a high seller, averaging \$9,000. Her maternal sister was another high seller, going to Tyler Hahn. Get this one bought!

CE	10	DOC	10.6
BW	1.0	CW	30.7
WW	68	YG	-.18
YW	103	Marb	.38
ADG	.22	BF	-.038
MCE	6	REA	.55
Milk	22	API	128
MWW	56	TI	73
Stay	15		



W/C Lock Down 206Z, AI Sire

LOT 49

LHT Ms. Executive 246E

Black Dbl Polled
Purebred
ASA#3315873
BD: 3-7-17
Tattoo: 246E
Adj BW: 72 Adj WW: 566

W/C Executive Order 8543B

LHT Ms. Direction 289A

W/C United 956Y
Miss Werning KP 8543U
GLS New Direction X184
LHT Ms. Jokers 811T 182P

A.I. Sire: W/C Lock Down 206Z (4-9-18) • Due: 1-15-19
EPDs: 13 -1.45 72 113 .26 7 24 60 17 12.1
Carcass: 36.6 -.25 .17 -.04 .81 131 74

I have loved this female since she was a baby. Big topped, big hip, plenty of rib, lots of style, and easy fleshing...Not your normal purebred Simmental here! Her great grandam was the 811T cow that was the foundation of Breinig Simmentals for a long time.



W/C Lock Down 206Z, AI Sire



LOT 50

LHT Ms. Executive 213E

Black Dbl Polled
5/8 SM 1/4 AN 1/8 MX
ASA#3315842
BD: 2-23-17
Tattoo: 213E
Adj BW: 81 Adj WW: 544

W/C Executive Order 8543B

LHT Ms. Upgrade 255Z

W/C United 956Y
Miss Werning KP 8543U
Mr. NLC Upgrade U8676
LHT Ms. Top Notch 289W

A.I. Sire: Hook's Encore 65E (4-21-18) • Due: 1-27-19
EPDs: 15 -1.05 66 101 .22 8 24 57 17 14.0
Carcass: 24.3 -.41 .37 -.06 .99 141 76

A really balanced female that is very structurally correct. This moderate made Executive Order female should have a lot of longevity in her!



Hook's Encore 65E, AI Sire



SELLING OUR BEST!
WE LOOK FORWARD TO SEEING YOU
AT OUR SALE ON SUNDAY,
DEC. 9TH IN BEATRICE, NE!

LOT 51

LHT Ms. Executive 251E

Black Dbl Polled
5/8 SM 3/8 AN
ASA#3315878
BD: 3-9-17 Tattoo: 251E
Adj BW: 70 Adj WW: 525

W/C Executive Order 8543B
LHT Ms. Bismark 11Z

W/C United 956Y
Miss Werning KP 8543U
S A V Bismarck 568Z
LHT Ms. Blackfoot 177G

A.I. Sire: J Bar J Nightride 225Z (5-10-18) • Due: 2-15-19
EPDs: 16 -2.35 62 98 .22 9 18 50 15 12.6
Carcass: 31.35 -.26 .48 -.05 .71 145 77



J Bar J Nightride 225Z,
AI Sire

Another exceptional granddaughter of the 177G cow, this heifer will make a tremendous cow. Her stoutness and calving ease numbers make her the perfect combination heifer.

CE	14	DOC	10.7
BW	-2.0	CW	28.8
WW	57	YG	-.26
YW	88	Marb	.17
ADG	-.19	BF	-.051
MCE	8	REA	.68
Milk	29	API	125
MWW	58	TI	66
Stay	16		



LHT Ms. Blackfoot 177G, Grandam

LOT 52

LHT Ms. Executive 264E



Black Dbl Polled
Purebred
ASA#3315892
BD: 3-15-17
Tattoo: 264E
Adj BW: 84 Adj WW: 643

W/C Executive Order 8543B W/C United 956Y
LHT Ms. Manifest 29Z Miss Werning KP 8543U
Nichols Manifest T79
LHT Ms. Ranch Hand 192W

A.I. Sire: Koch Big Timber 685D (4-19-18) • Due: 1-25-19
EPDs: 17 -2.15 78 121 .27 10 24 63 18 9.5
Carcass: 32.05 -.36 .22 -.07 .83 155 85

CE	12	DOC	11.0
BW	.2	CW	40.9
WW	80	YG	-.37
YW	129	Marb	.14
ADG	.31	BF	-.085
MCE	6	REA	.90
Milk	24	API	137
MWW	64	TI	80
Stay	16		

Here is another great daughter of the Executive Order bull. Her more than adequate numbers and attractive look make for a great addition to any operation. The Big Timber calf she has on the way should be a great way for her to start her calf producing career.



Koch Big Timber 685D,
AI Sire

LOT 53

LHT Ms. Beef King 276E



Red Dbl Polled
Purebred
ASA#3315903
BD: 3-25-17
Tattoo: 276E
Adj BW: 85 Adj WW: 631

LHT Mr. Beef King 53B WS Beef King W107
LHT Ms. Voltage 154B LHT Ms. Canyon 102R
SS/PRS High Voltage 244X
LHT Ms. S Force 36Z

A.I. Sire: GMRA Tesla 6214 (5-20-18) • Due: 2-25-19

CE	11	DOC	10.8
BW	1.7	CW	28.8
WW	82	YG	-.47
YW	115	Marb	-.15
ADG	.21	BF	-.093
MCE	5	REA	.99
Milk	17	API	131
MWW	58	TI	79
Stay	15		

This extremely stout and deep bodied red heifer has tons of growth being in the top 10 percentile in weaning weight and the top 20 percentile in yearling weight. The square hip and sound structure she possesses really makes her a desirable breeding piece.



GMRA Tesla 6214,
AI Sire

LOT 54

LHT Ms. Lock 265E

Black Baldy Dbl Polled
Purebred
 ASA#3315893
 BD: 3-16-17 Tattoo: 265E
 Adj BW: 82 Adj WW: 540

LHT Mr. Lock N Load 65C
LHT Ms. Direction 252A

Remington Lock N Load 54U
BWL Ginger 930Y
GLS New Direction X184
Lazy H Miss Remington

A.I. Sire: TJ Franchise 451D (5-20-18) • Due: 2-25-19
 EPDs: 15 .0 72 106 .22 9 20 56 16 9.9
 Carcass: 25.85 -.29 .21 -.06 .66 129 72



Here is an eye catcher! The super long and extended neck on this heifer, make her super easy to like. Her near impeccable structure and swooping rib cage make her stand out anywhere.

CE	9	DOC	6.6
BW	1.6	CW	18.6
WW	60	YG	-.51
YW	94	Marb	-.17
ADG	.21	BF	-.115
MCE	4	REA	.82
Milk	19	API	104
MWW	49	TI	58
Stay	15		



TJ Franchise 451D, AI Sire

LOT 55

LHT Ms. Lock 281E

Black Dbl Polled
Purebred
 ASA#3315908
 BD: 4-1-17
 Tattoo: 281E
 Adj BW: 86 Adj WW: 602

LHT Mr. Lock N Load 65C
LHT Ms On Line 177Y

Remington Lock N Load 54U
BWL Ginger 930Y
SS On Line
LHT Ms. Legend 29S

A.I. Sire: LHT Mr. Lock Down 36D (4-3-18) • Due: 1-9-19
 EPDs: 14 .3 65 101 .23 7 22 54 16 12.1
 Carcass: 26.9 -.24 .10 -.05 .56 119 66

This heifer of purely LHT genetics is what we have strived to raise for years. This deep bodied female is one that can get around with ease. Her easy fleshing ability makes her a great combination heifer to add to any operation.

CE	10	DOC	11.4
BW	1.7	CW	18.2
WW	62	YG	-.43
YW	92	Marb	-.09
ADG	.19	BF	-.089
MCE	3	REA	.77
Milk	20	API	115
MWW	51	TI	61
Stay	18		



LHT Mr. Lock Down 36D, AI Sire

LOT 56

LHT Ms. Big Deal 305E

Black Dbl Polled
Purebred
 ASA#3315931
 BD: 3-10-17
 Tattoo: 305E
 Adj BW: 80 ET Adj WW: 601

WLE Big Deal A617
WWS Antoinette 22B

SVF Steel Force S701
Shawnee Miss 770P
JF Milestone 999W
CNS-HFS Antoinette X403

A.I. Sire: Colburn Primo 5153 (5-20-18) • Due: 2-25-19
 EPDs: 13 .85 64 95 .20 8 17 49 11.2 10.15
 Carcass: 21.35 -.15 .27 -.03 .40 109 65

As soon as you look past all the color on this heifer, you can see a great one. She is super deep sided and extremely sound. The look this one has, added to the very popular Primo bull, should make for a very attractive calf that will do well in the show ring and beyond.

CE	11	DOC	10.5
BW	1.0	CW	21.1
WW	60	YG	-.47
YW	89	Marb	.08
ADG	.18	BF	-.115
MCE	5	REA	.73
Milk	23	API	115
MWW	53	TI	65
Stay	13		



Colburn Primo 5153, AI Sire





LHT Making Tracks 03C, Sire

LHT Making Tracks 03C Daughters

Making Tracks will go down in the history of Trauernicht Simmentals as a bull that added looks, power, performance, and fertility. These Making Tracks daughters look to me to be ones that are going to have the biggest calves trailing them at weaning time, and will still be fleshed up and looking good. We will be excited to hear the calf reports from these girls.



LOT 57

Black Homo Polled
1/2 SM 1/2 AN
ASA#3315876
BD: 3-8-17
Tattoo: 249E

Adj BW: 78 Adj VWW: 562

CE	13	DOC	11.5
BW	1.0	CW	24.7
WW	63	YG	-.19
YW	99	Marb	.43
ADG	.23	BF	-.022
MCE	5	REA	.61
Milk	21	API	128
MWW	52	TI	71
Stay	13		

LHT Ms. Tracks 249E

LHT Making Tracks 03C W/C Wide Track 694Y
LHT Ms. Predestined 266U BWL Ginger 930Y
G A R Predestined
Shady Brook Entense 1260

A.I. Sire: LHT Mr. Lock Down 36D (4-8-18) • Due: 1-15-19X
EPDs: 15 -.05 66 105 .25 8 22 55 14 12.15
Carcass: 30.15 -.12 .36 -.02 .48 131 73



LHT Mr. Lock Down 36D, AI Sire



LOT 58

Black Polled
1/2 SM 1/2 AN
ASA#3315885
BD: 3-11-17
Tattoo: 257E

Adj BW: 84 Adj VWW: 650

CE	11	DOC	9.0
BW	2.1	CW	22.9
WW	71	YG	-.23
YW	105	Marb	.20
ADG	.21	BF	-.033
MCE	5	REA	.65
Milk	17	API	107
MWW	53	TI	68
Stay	9		

LHT Ms. Tracks 257E

LHT Making Tracks 03C W/C Wide Track 694Y
OCC 312 Miss Paxton 312 BWL Ginger 930Y
OCC Paxton 730P
OCC Miss Eureka 409M

A.I. Sire: Koch Big Timber 685D (5-14-18) • Due: 2-19-19
EPDs: 16 -1.15 74 109 .22 9 21 58 15 8.5
Carcass: 8.5 23.05 -.29 .25 -.05 .71 134 77



LOT 59

Black Polled
1/2 SM 1/2 AN
ASA#3315895
BD: 3-16-17
Tattoo: 267E

Adj BW: 84 Adj VWW: 463

CE	12	DOC	9.3
BW	1.4	CW	21.9
WW	54	YG	-.23
YW	80	Marb	.19
ADG	.16	BF	-.034
MCE	5	REA	.63
Milk	15	API	101
MWW	42	TI	58
Stay	10		

LHT Ms. Tracks 267E

LHT Making Tracks 03C W/C Wide Track 694Y
LHT NMS Midland 105 BWL Ginger 930Y

A.I. Sire: Koch Big Timber 685D (5-20-18) • Due: 2-25-19
EPDs: 17 -1.55 65 96 .19 9 20 52 15 8.65
Carcass: 22.55 -.29 .24 -.05 .70 131 72



Koch Big Timber 685D, AI Sire



Thank you to friends for your interest in our fall open house! We appreciate you!

LOT 60

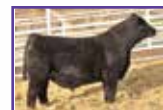
LHT Ms. Believe 313E

Homo Black Dbl Polled
Purebred
ASA#3315945
BD: 3-5-17 Tattoo: 313E
Adj BW: 85 ET Adj WW: 706

LLSF Pays To Believe ZU194
BWL Ginger 930Y

CNS Pays To Dream T759
LLSF Ura Babydoll U194
SVF Steel Force S701
J&C/SS Bernadette

A.I. Sire: TJ Franchise 451D (4-5-18) • Due: 1-11-19
EPDs: 15 .35 79 113 .21 9 17 56 14 11.65
Carcass: 31.85 -.25 .29 -.05 .71 130 78



TJ Franchise 451D,
AI Sire



Another member of the Ginger cow family, you can bet this one will do great things. This stout made heifer is one that is sure to produce good structured, functional cattle that might even make it to the show ring.

CE	10	DOC	10.1
BW	2.3	CW	30.6
WW	74	YG	-.43
YW	106	Marb	-.01
ADG	.20	BF	-.090
MCE	5	REA	.92
Milk	13	API	107
MWW	50	TI	69
Stay	11		



BWL Ginger 930Y, Dam



LHT Mr. United 57C, Sire

LHT Mr. United 57C Daughters

Not many times are you excited when a bull gets hurt, but sometimes things have a way of working out to be an advantage. When we had to pull this bull out of our Production Sale because of an injury, we soon realized that we had found a bull for our biggest pasture. His dam has a picture perfect udder and is a "role model" cow. His sire, W/C United, has been a staple in our program. Whether you are looking for one or for a trailer load, his daughters will be about as good as you will find both phenotypically and genotypically (they look good and look good on paper). These girls were some of the later ones born, but first one to cycle and to breed. These are the kind of females to buy and make the foundation of a herd.

LOT 61

LHT Ms. United 219E

Black Polled 1/2 SM 1/2 AN • ASA#3315848
BD: 2-26-17 • Tattoo: 219E • Adj BW: 81 • Adj WW: 547

LHT Mr. United 57C

W/C United 956Y
LHT Ms. Legend 22U
S A V Mandan 5664
LHR Ms. 600 551K

LHT Ms. Mandan 76X



LHT Mr. Lock Down 36D, AI Sire

Moderate framed, easy fleshing, and near perfect udder will explain this one. Excellent cow family on both top and bottom sides of the pedigree.

CE	11	DOC	10.7
BW	.7	CW	39.5
VVW	56	YG	-.06
YW	97	Marb	.34
ADG	.26	BF	-.006
MCE	6	REA	.53
Milk	24	API	127
MWW	52	TI	65
Stay	17		

A.I. Sire: LHT Mr. Lock Down 36D (4-28-18) • Due: 2-3-19
EPDs: 14 -.2 62 104 .26 8 24 55 16 11.75
Carcass: 37.55 -.05 .32 -.01 .44 125 68





LOT 62

LHT Ms. United 231E

Black Dbl Polled 1/2 SM 1/2 AN • ASA#3315858
BD: 3-2-17 • Tattoo: 231E • Adj BW: 79 • Adj WW: 572

LHT Mr. United 57C
LHT Ms. Rookie 49Y

W/C United 956Y
LHT Ms. Legend 22U
PVF-J 4P14 Hyb Rookie
KS Miss VRD R73



LHT Mr. Lock Down 36D, AI Sire

CE	13	DOC	10.9
BW	-.1	CW	44.3
WW	64	YG	-.14
YW	112	Marb	.22
ADG	.30	BF	-.032
MCE	7	REA	.64
Milk	24	API	127
MWW	56	TI	69
Stay	16		

A.I. Sire: LHT Mr. Lock Down 36D (4-28-18) • Due: 2-3-19
EPDs: 15 -.6 66 111 .28 9 24 57 15 11.85
Carcass: 39.95 -.09 .26 -.03 .49 131 72



LOT 63

LHT Ms. United 234E

Black Dbl Polled 1/2 SM 1/2 AN • ASA#3315861
BD: 3-3-17 • Tattoo: 234E • Adj BW: 82 • Adj WW: 613

LHT Mr. United 57C
LHT Ms. Mountain 111B

W/C United 956Y
LHT Ms. Legend 22U
S A V Iron Mountain 8066
KS Wanda S203



W/C Lock Down 206Z, AI Sire

CE	11	DOC	11.8
BW	.5	CW	41.0
WW	67	YG	-.08
YW	113	Marb	.27
ADG	.28	BF	-.022
MCE	7	REA	.48
Milk	23	API	125
MWW	56	TI	71
Stay	15		

A.I. Sire: W/C Lock Down 206Z (4-21-18) • Due: 1-27-19
EPDs: 12 -.65 72 117 .29 7 23 59 18 12.3
Carcass: 44.45 -.07 .31 -.01 .59 138 75



LOT 64

LHT Ms. United 237E

Black Dbl Polled 1/2 SM 1/2 AN
ASA#3315864
BD: 3-5-17
Tattoo: 237E

LHT Mr. United 57C
LHT Ms. Bismark 120A

W/C United 956Y
LHT Ms. Legend 22U
S A V Bismarck 5682
LHT Ms. Upgrade 303X

Adj BW: 80 Adj WW: 597

CE	13	DOC	11.2
BW	.3	CW	37.6
WW	71	YG	-.14
YW	118	Marb	.27
ADG	.29	BF	-.025
MCE	7	REA	.60
Milk	21	API	129
MWW	57	TI	73
Stay	15		

LHT Mr. Lock Down 36D, AI Sire

A.I. Sire: LHT Mr. Lock Down 36D (4-1-18) • Due: 1-7-19
EPDs: 15 -.40 70 114 .28 9 22 57 15 12.0
Carcass: 36.6 -.09 .28 -.02 .47 132 74

BID ONLINE AT
LiveAuctionsTV



LOT 65

LHT Ms. United 259E

Black Dbl Polled
1/2 SM 1/2 AN
ASA#3315887
BD: 3-12-17 Tattoo: 259E
Adj BW: 82 Adj WW: 621

LHT Mr. United 57C
LHT Mr. Upscale 172B

W/C United 956Y
LHT Ms. Legend 22U
SS Upscale X2S
LHT Ms. Froniter 55T

A.I. Sire: JSAR Kansas (5-7-18) • Due: 2-12-19



CE	12	DOC	10.4
BW	1.1	CW	37.9
WW	64	YG	-.12
YW	101	Marb	.27
ADG	.23	BF	-.027
MCE	7	REA	.55
Milk	21	API	115
MWW	53	TI	67
Stay	11		



JSAR Kansas, AI Sire

LOT 66

LHT Ms. United 245E

Black Dbl Polled
5/8 SM 1/2 AN
ASA#3315872
BD: 3-7-17
Tattoo: 245E

Adj BW: 76 Adj WW: 590

LHT Mr. United 57C
LHT Ms. Brand Name 251A
W/C United 956Y
LHT Ms. Legend 22U
S A V Brand Name 9115
Ankony Ms. Daumes R57

A.I. Sire: LHT Mr. Lock Down 36D (4-22-18) • Due: 1-28-19
EPDs: 14 -.45 71 117 .29 9 21 57 14 10.7
Carcass: 40.85 -.08 .22 -.02 .49 127 73

CE	12	DOC	8.6
BW	.2	CW	46.1
WW	73	YG	-.12
YW	123	Marb	.15
ADG	.31	BF	-.026
MCE	7	REA	.64
Milk	19	API	120
MWW	56	TI	71
Stay	14		



LHT Mr. Lock Down 36D, AI Sire

LOT 67

LHT Ms. United 271E 272E

Black Dbl Polled
1/2 SM 1/2 AN
ASA#3315900
BD: 3-20-17
Tattoo: 272E

Adj BW: 85 Adj WW: 621

LHT Mr. United 57C
LHT Ms. Upward 43B
W/C United 956Y
LHT Ms. Legend 22U
Sitz Upward 307R
KS Miss Godfather W923

A.I. Sire: Hook's Encore 65E (4-23-18) • Due: 1-27-19
EPDs: 14 -.35 68 108 .26 9 25 59 19 14.25
Carcass: 30.6 -.29 .42 -.04 .85 146 78

CE	12	DOC	11.6
BW	1.0	CW	46.0
WW	67	YG	-.11
YW	114	Marb	.31
ADG	.30	BF	-.026
MCE	6	REA	.61
Milk	24	API	130
MWW	58	TI	71
Stay	17		



Hook's Encore 65E, AI Sire

LOT 68

LHT Ms. United 279E

Black Dbl Polled
5/8 SM 3/8 AN
ASA#3315906
BD: 3-30-17
Tattoo: 279E

Adj BW: 79 Adj WW: 600

LHT Mr. United 57C
LHT Ms. Mo Majic 63Y
W/C United 956Y
LHT Ms. Legend 22U
SC Mo Magic S47
LHT Ms. Blackman 104K

A.I. Sire: LHT Mr. Lock Down 36D (4-7-18) • Due: 1-13-19
EPDs: 14 -.3 65 109 .28 9 25 58 15 12.85
Carcass: 38.8 -.13 .23 -.04 .51 128 70

CE	11	DOC	12.9
BW	.5	CW	42.0
WW	61	YG	-.21
YW	107	Marb	.16
ADG	.29	BF	-.051
MCE	7	REA	.68
Milk	27	API	120
MWW	57	TI	65
Stay	16		



LHT Mr. Lock Down 36D, AI Sire

LOT 69

LHT Ms. United 296E

Black Polled
3/4 SM 1/4 AN
ASA#3315922
BD: 4-24-17
Tattoo: 296E

Adj BW: 81 Adj WW: 713

LHT Mr. United 57C
LHT Ms. God Father 66X
W/C United 956Y
LHT Ms. Legend 22U
KS The Godfather S127
LHT Ms. Dice 42M

A.I. Sire: LHT Mr. Lock Down 36D (4-19-18) • Due: 1-25-19
EPDs: 13 .5 70 115 .28 7 23 58 15 12.1
Carcass: 36.35 -.15 .26 -.04 .51 127 72

CE	10	DOC	11.4
BW	2.1	CW	37.1
WW	71	YG	-.26
YW	120	Marb	.23
ADG	.30	BF	-.061
MCE	4	REA	.68
Milk	22	API	120
MWW	58	TI	71
Stay	15		



LHT Mr. Lock Down 36D, AI Sire



LOT 70

Black Polled
1/4 SM 3/4 AN
 ASA#(3315925)
 BD: 4-26-17
 Tattoo: 300E

Adj BW: 74 Adj WW: 671

S A V Iron Mountain 8066, AI Sire

300E

LHT Mr. United 57C
 907

W/C United 956Y
 LHT Ms. Legend 22U

A.I. Sire: S A V Iron Mountain 8066 (5-20-18) • Due: 2-25-19



LOT 71

Black Dbl Polled
Purebred
 ASA#3309083
 BD: 7-2-17
 Tattoo: 10E

Adj BW: 95 Adj WW: 548

CE	10	DOC	9.7
BW	2.1	CW	17.7
WW	62	YG	-.43
YW	89	Marb	-.01
ADG	.17	BF	-.110
MCE	6	REA	.61
Milk	19	API	107
MWW	50	TI	63
Stay	12		

JZ Ms. Pawnee 10E

JZ Mr. Right Dir 08C

GLS New Direction X184
 OBCC Foolin U P01W
 SS Upscale X25
 SS Miss Jesse

JZ Ms. Coco 45A

A.I. Sire: SVF Allegiance Y802 (9-30-18) • Due: 7-9-19
 EPDs: 11 2.2 78 114 .23 7 17 55 12 12.7
 Carcass: 32.65 -.44 .07 -.11 .79 120 75

Guest Breeder:

State Line Farm Simmentals



SVF Allegiance Y802, AI Sire

This Black Baldy heifer is long bodied, deep ribbed and moves with ease. She is AI bred to SVF Allegiance, an Upgrade son that has great muscle, growth and carcass merit in a package that is easy on the eyes.



LOT 72

Black Dbl Polled
1/2 SM 15/32 AN 1/32 CS

ASA#3486564
 BD: 2-24-17
 Tattoo: 46E

Adj BW: 81 Adj WW: 557

CE	10	DOC	8.9
BW	4	CW	16.3
WW	49	YG	-.18
YW	70	Marb	.24
ADG	.13	BF	-.034
MCE	6	REA	.43
Milk	24	API	102
MWW	48	TI	58
Stay	10		

NEU Ms. Wendy 46E

W/C No Remorse 763Y

Yardley High Regard W242
 DW Susanna 763T
 Sandeen Salute Or Surren
 B&R Miss Wendy Z383

NEU Ms. Wendy 08C

A.I. Sire: GCC Hard As Steel 144W (4-14-18) • Due: 1-21-19
 EPDs: 11 .5 50 70 .13 4 16 41 10 5.5
 Carcass: 11.45 -.18 .22 -.03 .42 103 57

Guest Breeder:

Neumann Farms



GCC Hard As Steel 144W, AI Sire

Here is a moderate No Remorse daughter that I am sure you will be able to find on sale day. This female exceeded my expectations how she turned out and I am sure her calf will be one to turn heads. She is bred to GCC Hard As Steel for a mid-January calf.



LOT 73

Black Dbl Polled
1/2 SM 1/2 AN
 ASA#3486566
 BD: 1-9-17
 Tattoo: 05E

Adj BW: 82 Adj WW: 576

CE	10	DOC	5.7
BW	1.6	CW	10.5
WW	56	YG	-.19
YW	82	Marb	.20
ADG	.16	BF	-.021
MCE	3	REA	.46
Milk	14	API	100
MWW	41	TI	59
Stay	10		

NEU Ms. H.A.S. 05E

GCC Hard As Steel 144W

SVF Steel Force S701
 O C C Juanada 898L
 W/C No Remorse 763Y
 LHT Ms. Merger 159R

NEU Ms. Last Chance 01C

A.I. Sire: W/C Lock Down 206Z (4-13-18) • Due: 1-20-19
 EPDs: 12 -.1 66 102 .23 6 19 51 16 9.25
 Carcass: 9.25 29.2 -.12 .27 -.01 .58 126 70

Guest Breeder:

Neumann Farms



W/C Lock Down 206Z, AI Sire

This bred heifer is moderate and goes back to one of the first cows I ever bought that had LHT brand on her side. She is a moderate half-blood that puts it all in a nice package. I liked this heifer so much I bred her dam back the same way this year to make myself a full sib to retain back. She is bred to Lock Down for a mid-January calf.

BID ONLINE AT
LiveAuctions.TV

LOT 74

NEU Ms. Wendy 14E

Black Dbl Polled
3/4 SM 1/4 AN
ASA#3486560
BD: 1-13-17 Tattoo: 14E
Adj BW: 101 Adj WW: 605

Yardley High Regard W242
Yardley Impressive T371
Miss Yardley T68
SVF Steel Force S701
LCC Wendy MH378

A.I. Sire: CCR Anchor 9071B (4-13-18) • Due: 1-20-19
EPDs: 11 1.45 67 96 .18 4 26 59 15 14.05
Carcass: 28.4 -.27 .36 -.04 .74 125 71



Guest Breeder:
Neumann Farms

Why I am letting another High Regard female go is beyond me. I cannot get enough of these females in the herd. This female has mass and puts it into a good package. She is bred to CCR Anchor for a mid-January calf.

CE	8	DOC	10.5
BW	2.5	CW	23.6
WW	63	YG	-.30
YW	94	Marb	.17
ADG	.19	BF	-.054
MCE	3	REA	.71
Milk	19	API	100
MWW	50	TI	62
Stay	11		



CCR Anchor 9071B, AI Sire

LOT 75

LHT Ms. Top Grade 314D

Black Dbl Polled
3/4 SM 1/4 AN
ASA#3276193
BD: 9-1-16
Tattoo: 314D

Adj BW: 85 Adj WW: 577

MCM Top Grade 018X
Mr. NLC Upgrade U8676
MCM 513R
LHT Ms. Manifest 291A
Nichols Manifest T79
LHT Ms. 095 266W

A.I. Sire: LHT Mr. Lock Down 36D (4-10-18) • Due: 1-16-19
EPDs: 13 .05 63 104 .25 9 26 58 16 11.5
Carcass: 32.95 -.19 .34 -.05 .52 133 71
Pasture Sire: LHT Mr. Intergrate 148E (5-18 to 9-1-18)

This heifer has a true foundation of LHT genetics. She goes back generations of LHT cows that show the longevity of this cow family. Her future looks bright for any path you would like to take with her.

CE	9	DOC	10.2
BW	1.2	CW	30.3
WW	58	YG	-.34
YW	97	Marb	.39
ADG	.24	BF	-.083
MCE	7	REA	.70
Milk	29	API	131
MWW	58	TI	68
Stay	18		



LHT Mr. Lock Down 36D, AI Sire

LOT 76

LHT Ms. Redemption 323D

Red Dbl Polled
1/2 SM 1/2 AR
ASA#3276201
BD: 9-3-16
Tattoo: 323D

Adj BW: 76 ET Adj WW: 591

Brown JYJ Redemption Y1334
Beckton Nebula P P707
JYJ Ms. Jolene W16
LHT Ms. Dream-On 06T
CNS Dream On L186
LHT Ms. Blackfoot 177G

A.I. Sire: WS All Aboard B80 (4-26-18)
A.I. Sire: LHT Mr. Executive 191D (5-18-18) • Due: 2-23-19
EPDs: 14 -1.5 56 87 .2 7 27 55 16 11.35
Carcass: 18.8 -.35 .20 -.07 .67 126 66

Here is a heifer with proven genetics behind her. This 06T x Redemption daughter has had many siblings that have gone on to do great things! Her three full brothers averaged just over \$4,000 this past February. This stout made, super deep bodied and sound heifer is one that would work well in any operation.



LHT Mr. Executive 191D, AI Sire

CE	13	DOC	9.3
BW	-2.5	CW	17.2
WW	44	YG	-.22
YW	68	Marb	.29
ADG	.15	BF	-.048
MCE	8	REA	.43
Milk	28	API	127
MWW	50	TI	61
Stay	17		



LOT 77

SS Ever Cotton D854

**Black Dbl Polled
Purebred**
ASA#3282316
BD: 9-26-16 Tattoo: D854
Adj BW: 82 ET Adj VVW: 734

**Hook's Broadway 11B
KenCo Miley Cottontail**

**MCM Top Grade 018X
Hook's Water Lily 89W
GWS Ebonys Trademark 6N
JM Dice-H25-L24**

A.I. Sire: W/C Executive Order 8543B (4-24-18) • Due: 1-30-19
EPDs: 12 .2 77 118 .26 6 25 6 25 63 11 12.6
Carcass: 34.0 -.40 .20 -.08 .91 129 80



W/C Executive Order 8543B, AI Sire

This Cottontail daughter is a great extension to the legacy of the Cottontail cow family. A super long spined heifer that pulls her length into a pretty package, she will make a great cow in a variety of operations.

CE	8	DOC	13.0
BW	2.7	CW	33.5
WW	76	YG	-.44
YW	114	Marb	.17
ADG	.23	BF	-.102
MCE	5	REA	.89
Milk	23	API	119
MWW	61	TI	75
Stay	12		



KenCo Miley Cottontail, Dam

LOT 78

LHT Ms. Big Deal 325D

**Black Polled
Purebred**
ASA#3276203
BD: 9-6-16
Tattoo: 325D

Adj BW: 80 ET Adj VVW: 718

CE	10	DOC	7.3
BW	1.7	CW	13.9
WW	54	YG	-.40
YW	79	Marb	.05
ADG	.15	BF	-.105
MCE	3	REA	.50
Milk	19	API	110
MWW	45	TI	59
Stay	14		

WLE Big Deal A617

WS OS Kelsey Z080

**SVF Steel Force S701
Shawnee Miss 770P
STF Bullseye 01W
HSF Chelsea X045**

A.I. Sire: LHT Mr. Executive 191D (5-22-18) • Due: 2-27-19
EPDs: 12 .6 61 92 .20 4 22 53 15 10.35
Carcass: 17.15 -.44 .08 -.10 .71 122 66

This heifer is one that packs some look into a very functional package. Her tremendous body capacity and structural correctness make for a heifer that will be a great addition to any operation.



LHT Mr. Executive 191D, AI Sire



LOT 79

LHT Ms. All-In 67D

**Red Dbl Polled
3/4 SM 1/4 AR**
ASA#3227900
BD: 1-12-16
Tattoo: 67D

Adj BW: 83 Adj VVW: 658

CE	13	DOC	12.2
BW	.5	CW	26.0
WW	80	YG	-.28
YW	119	Marb	.02
ADG	.25	BF	-.071
MCE	10	REA	.54
Milk	29	API	116
MWW	69	TI	73
Stay	15		

WS All In W111

LHT Ms. Conquest 191B

**HSF High Roller 12T
WS Miss Tracy T50
HXC Conquest 4405P
Ankony Ms. Daumes R57**

A.I. Sire: WS All Aboard B80 (5-19-18) • Due: 2-24-19
EPDs: 14 .20 89 132 .27 10 23 67 17 13.85
Carcass: 37.55 -.39 .27 -.09 .84 151 89

Beautiful 2nd calf heifer that had a tremendous calf her first round. She is extremely deep bodied and feminine. I am very excited to see her next year's calf out of All Aboard.



WS All Aboard B80, AI Sire





H2R Profitbuilder B403, AI Sire

LOT 80

Red Dbl Polled Purebred
 ASA#3192896
 BD: 3-29-16
 Tattoo: 255D

Adj BW: 82 Adj WW: 699

LHT Ms. Beef 255D

LHT Mr. Beef King 53B

WS Beef King W107

CDI Ms. Shear Force 63Y

LHT Ms. Canyon 102R

Hooks Shear Force 38K

CDI Ms. High Roller 81W

A real good moderate framed female here that should out produce herself. She is a maternal sib to a Beef King brother that sold for \$8,000 a couple of years ago. Her dam was dad's selection of the CDI bred heifers a few years back.

A.I. Sire: H2R Profitbuilder B403 (4-26-18)
 EPDs: 12 -1.4 76 115 .25 5 18 56 16 13.45
 Carcass: 30.0 -.11 .48 -.02 .42 137 80
 Pasture Sire: LHT Mr. Intergrate 148E (5-18 to 9-1-18)

CE	12	DOC	12.3
BW	-.1	CW	32.2
VWV	71	YG	-.48
YW	103	Marb	.14
ADG	.20	BF	-.098
MCE	6	REA	1.02
Milk	25	API	137
MWW	60	TI	75
Stay	18		

LOT 81

LHT Ms. Upgrade 162C

Black Dbl Polled 3/4 SM 1/4 AN
 ASA#3052255
 BD: 2-14-15
 Tattoo: 162C

Adj BW: 77 Adj WW: 558

Mr. NLC Upgrade U8676

Ellingson Legacy M229

LHT Ms. Top Notch 233W

Ms. NLC Mojo S6119 B

SAW EMB 110 Topnotch 712

LHT Ms. 24-7 64S

Pasture Sire: LHT Mr Executive 266D (5-12 to 8-1-18)
 EPDs: 17 .15 69 105 .23 5 21 55 14 11.5
 Carcass: 29.05 -.44 .06 -.09 .92 124 72

A tremendous young Upgrade daughter that has done a good job for us Look for her to raise your next herd sire.



CE	12	DOC	12.2
BW	.5	CW	31.0
WW	66	YG	-.42
YW	99	Marb	.16
ADG	.21	BF	-.090
MCE	5	REA	.91
Milk	20	API	117
MWW	52	TI	67
Stay	14		

LOT 82

JZ Ms. Black Kitty 09B

Black Dbl Polled 3/4 SM 1/4 AN
 ASA#2849432
 BD: 4-9-14
 Tattoo: 09B

Adj BW: 79 Adj WW: 557

SS Upscale X25

Mr. NLC Upgrade U8676

SVF NJC Magnetic Ldy M25

JZ Ms. Lissy 01U

B C Lookout 7024

JZ Ms. Mariah 01S

A.I. Sire: Koch Big Timber 685D (6-20-18) • Due: 3-30-19
 EPDs: 17 -1.85 69 100 .19 10 22 57 17 7.6
 Carcass: 26.1 -.36 .20 -.08 .72 148 79

Guest Breeder:

State Line Farm Simmentals

This solid black cow is big bellied, great bodied and moderate framed. Her sire is SS Upscale X25, which is out of Sloup Simmentals great SVF NJC Magnetic Lady cow. Take a close look at the expected EPD's of this mating. She sells AI bred to the very popular Koch Big Timber bull.



Koch Big Timber 685D, AI Sire

CE	11	DOC	7.6
BW	1.3	CW	28.8
WW	61	YG	-.35
YW	86	Marb	.09
ADG	.16	BF	-.089
MCE	6	REA	.64
Milk	21	API	106
MWW	51	TI	61
Stay	14		

LOT 83

LHT Ms. Chopper 232A

Black Dbl Polled 1/2 SM 1/2 AN
 ASA#2769737
 BD: 6-14-13
 Tattoo: 232A

Adj BW: 72 Adj WW: N/A

LHT Mr. Chopper 104Y

ZKCC Chopper 844U

KJ Pride 5129

LHT Ms. Top Notch 225X

SAW EMB 110 Topnotch 712

LHT Ms. Blackman 69K

Pasture Sire: LHT Mr Executive 266D (5-12 to 8-1-18)
 EPDs: 12 -.15 58 83 .17 6 15 43 13 8.3
 Carcass: 21.25 -.33 .10 -.06 .68 109 61

Here is a half blood cow that has some older, but proven genetics. She will make a great cow in anyone's operation.

CE	12	DOC	5.9
BW	-.3	CW	15.2
WW	42	YG	-.20
YW	55	Marb	.22
ADG	.08	BF	-.035
MCE	6	REA	.43
Milk	7	API	108
MWW	28	TI	53
Stay	14		

BID ONLINE AT
LiveAuctions.TV

LOT 84

LHT Ms. Combination 82Y

Black Dbl Polled 1/2 SM 1/2 AN
 ASA#2593430
 BD: 2-13-11
 Tattoo: 82Y

Adj BW: 82 Adj WW: 578

GLS Combination R2

B/R New Frontier 095

GLS Hostess H16

LHT Ms. Legend 22U

O C C Legend 616L

MHT Ms. Blackman 104K

A.I. Sire: CCR Flint Rock 0101E (5-17-18) • Due: 2-22-19
 EPDs: 12 1.25 69 107 .24 6 22 56 15 16.65
 Carcass: 35.4 -.10 .40 .00 .64 131 73
 Pasture Sire: LHT Mr Lock N Load 65C (5-7 to 8-1-18)

Solid producing, moderate framed cow that gets it done year in and year out! Her last year's bull sold for \$4,250. She can pay for herself with one calf.



CCR Flint Rock 0101E, AI Sire

CE	12	DOC	11.3
BW	1.7	CW	33.3
WW	59	YG	-.19
YW	97	Marb	.28
ADG	.24	BF	-.025
MCE	5	REA	.70
Milk	25	API	124
MWW	54	TI	65
Stay	17		





GAR Sure Fire, AI Sire

LOT 85

Black Dbl Polled Purerbred
ASA#2593450
BD: 2-25-11
Tattoo: 103Y

Adj BW: 90 Adj WW: 594

SVF/NJC Mo Better M217
LHT Ms. Destiny 59L

LHT Ms. Mo Better 103Y

STF Mr. Momentum H508
NJC SVF Antoinette K205
Nichols Blk Destiny D12
BS Miss BD 0114Y

A.I. Sire: GAR Sure Fire (5-16-18) • Due: 2-21-19
EPDs: 14 -.15 66 108 .27 8 25 58 15 12.25
Carcass: 39.65 -.11 .66 -.02 .61 152 81
Pasture Sire: LHT Mr Executive 266D (5-20-18 to 8-1-18)

This cow has proven herself in our operation and will continue to do great things as she continues to mature. She is the the granddam of last year's high selling bred heifer.

CE	9	DOC	9.3
BW	2.5	CW	30.1
WW	63	YG	-.34
YW	100	Marb	.05
ADG	.23	BF	-.094
MCE	4	REA	.59
Milk	23	API	120
MWW	54	TI	64
Stay	18		



LOT 86

Black Dbl Polled 3/4 SM 1/4 AN
ASA#2652665
BD: 2-25-12
Tattoo: Z37

Adj BW: 88 ET Adj WW: 601

CE	7	DOC	3.2
BW	2.2	CW	11.8
WW	56	YG	-.38
YW	80	Marb	-.04
ADG	.15	BF	-.080
MCE	5	REA	.61
Milk	24	API	91
MWW	51	TI	53
Stay	14		

BT Miss Calypso Z37

Westfall Voyager 721P
BT Miss Meyer U440

SVF Power Surge
Drake Summer Sister
Meyer Ranch 734
Vermillion Erica 8906

A.I. Sire: CCR Anchor 9071B (4-14-18)
EPDs: 12 .75 63 89 .16 8 27 59 16 10.4
Carcass: 19.5 -.30 .30 -.05 .65 126 69
Pasture Sire: NEU To The Max 18C (5-5 to 7-16-18)

Guest Breeder:
Neumann Farms

Here is a 3/4 blood cow that knows how to shell out bull calves. She has done a really good job here for us. She is a full sister to many high sellers of Brad Tuckers. She is likely safe to AI.



CCR Anchor 9071B, AI Sire

BID ONLINE AT
LiveAuctions TV



LOT 87

Black Dbl Polled 1/2 SM 1/2 AN
ASA#2652673
BD: 3-6-12
Tattoo: Z383

Adj BW: 82 ET Adj WW: N/A

CE	11	DOC	8.8
BW	.8	CW	25.2
WW	58	YG	-.21
YW	84	Marb	.44
ADG	.16	BF	-.054
MCE	10	REA	.43
Milk	25	API	125
MWW	53	TI	68
Stay	14		

B&R Miss Wendy Z383

3C Macho M450 BZ
LCC Wendy MH378

Meyer Ranch 734
3C Crocus H112 B
Rockn D Ambush 1531
LCC Wendy K3032

A.I. Sire: CLO LTS Entourage 72T (4-14-18)
EPDs: 11 .9 62 91 .18 7 23 54 16 13.3
Carcass: 26.95 -.39 .09 -.09 .76 114 63
Pasture Sire: NEU Happy Hour (5-5 to 7-16-18)

Guest Breeder: Neumann Farms

This Macho cow will be missed here but there is a daughter back in the herd and like I said I need to make room for the younger gals coming up. She has worked well with the Dream On sons and grandsons. She was Aled to CLO Entourage and pasture exposed to our Angus New Edition x Echelon son Neu Happy Hour. Most likely bull bred for a April Calf.



CLO LTS Entourage 72T, AI Sire



LOT 88

Black Homo Polled 1/2 SM 1/2 AN
ASA#2594192
BD: 2-14-11
Tattoo: Y16

Adj BW: 73 ET Adj WW: 620

CE	13	DOC	6.7
BW	-.3	CW	21.2
WW	54	YG	-.23
YW	80	Marb	.18
ADG	.16	BF	-.037
MCE	8	REA	.58
Milk	16	API	106
MWW	43	TI	60
Stay	10		

B&R Miss Wendy Y16

SVF Steel Force S701
LCC Wendy MH378

CNS Dream On L186
SVF Sheza Beauty L901
Rockn D Ambush 1531
LCC Wendy K3032

A.I. Sire: LHT Making Tracks 03C (4-14-18) • Due: X
EPDs: 13 1.45 67 101 .21 5 13 46 13 8.5
Carcass: 23.55 -.41 .05 -.07 .88 108 64
Pasture Sire: NEU To The Max 18C (5-5 to 7-16-18)

Guest Breeder: Neumann Farms

Here is a half blood Steel Force daughter I am sure you will find on sale day. The only reason I am letting some of these cows go is I kept too many heifers the last couple years and need to make room. Wendy is a consistent producer and stays bred up early.



LHT Making Tracks 03C, AI Sire

LOT 89

LHT Ms. United 54D

Black Dbl Polled
1/4 SM 1/2 AN 1/4 CS
ASA#3193001
BD: 1-8-16 Tattoo: 54D
Adj BW: 85 Adj WW: 708

W/C United 956Y TNT Tuition U238
Miss Werning 956W
LHT Ms Outlook 06X DCC 002 Outlook 472
LHT Ms Blackfoot 177G

A.I. Sire: TJ Franchise 451D (5-3-18) • Due: 2-9-19
EPDs: 15 .35 79 117 .24 10 21 61 16 10.85
Carcass: 34.30 -.11 .44 -.02 .53 137 80

Another great heifer that goes back to the great 177G donor. This Untied heifer is a super deep bodied heifer that has plenty of growth.

CE	10	DOC	8
BW	2.0	CW	37.9
WW	73	YG	-.15
YW	116	Marb	.29
ADG	-.26	BF	-.034
MCE	7	REA	.59
Milk	23	API	115
MWW	60	TI	70
Stay	15		

LOT 90

LHT Ms. Wide Track 06C

Black Dbl Polled
1/2 SM 1/2 AN
ASA#2998527
BD: 1-1-15 Tattoo: 06C
Adj BW: 84 Adj WW: 688

W/C Wide Track 694Y 3C W/C Right Track W9462
Miss Werning 6945
T K Edella R372 TC Franchise 360
T K Edella 711

A.I. Sire: ACLL Fortune 393D (4-14-18) • Due: 1-21-19
EPDs: 7 3.0 71 110 .24 1 20 55 11 12.15
Carcass: 33.4 -.32 .11 -.07 .76 100 65

From show ring success to raising great looking calves, this cow has done it all. This Widetrack cow is one that will add lots of extension and look to her calves.

CE	8	DOC	12
BW	4.0	CW	41.3
WW	74	YG	-.15
YW	118	Marb	.31
ADG	-.27	BF	-.032
MCE	2	REA	.63
Milk	19	API	111
MWW	56	TI	70
Stay	12		

LOT 91

LHT Ms. Upgrade 159C

Black Dbl Polled
Purebred 5M
ASA#0352252
BD: 2-12-15 Tattoo: 159C
Adj BW: 89 Adj WW: 579

Mr NLC Upgrade U8676 Ellingson Legacy M229
Ms NLC Mojo S6119 B
LHT Ms B Advance 53Y LFBISS Black Advance 426U
LHT Ms Legend 23U

A.I. Sire: LHT Mr Integrate 148E (9-1-18) • Due: 4-1-19
EPDs: 11 2.4 83 128 .29 5 24 65 14 12.35
Carcass: 41.7 -.46 .09 -.11 .99 126 78

Here is another great daughter of Upgrade. Going back to Legend on the bottom side this one is not one to disappoint. This heifer will add some extra growth as well being in the top 10 percentile of weaning and yearling weight.

CE	10	DOC	12
BW	2.8	CW	34.7
WW	81	YG	-.49
YW	121	Marb	.08
ADG	-.25	BF	-.108
MCE	2	REA	1.01
Milk	23	API	123
MWW	63	TI	76
Stay	15		

LOT 92

LHT Ms. Upgrade 349C

Black Dbl Polled
1/2 SM 1/2 AN
ASA#3160627
BD: 9-25-15 Tattoo: 349C
Adj BW: 85 Adj WW: 662

Mr NLC Upgrade U8676 Ellingson Legacy M229
Ms NLC Mojo S6119 B
LHT Ms Final Answer 232Z SAV Final Answer 0035
LHT Ms Time Out 304X

A.I. Sire: TJ Main Event 503B (5-7-18) • Due: 2-13-19
EPDs: 12 1.15 91 136 .29 5 23 69 15 12.75
Carcass: 39.50 -.23 .39 -.05 .74 139 87

How can you go wrong with an Upgrade daughter...I don't think you can! This halfblood heifer not only has an attractive look to her, but also has some very impressive number being in the top 2 percentile of both weaning and yearling weight.

CE	11	DOC	11.5
BW	1.9	CW	32.2
WW	86	YG	-.22
YW	133	Marb	.37
ADG	-.29	BF	-.043
MCE	5	REA	.66
Milk	16	API	132
MWW	59	TI	82
Stay	14		

LOT 93

LHT Mr. Lock Down 61E

Black Dbl Polled 1/2 SM 1/2 AN
ASA#3315697 BD: 1-8-17 Tattoo: 61E Adj BW: 82 Adj WW: 750

W/C Lock Down 206Z Remington Lock N Load 54U
G C F Miss New Level R206
LHT Ms. Final Answer 282B S A V Final Answer 0035
LHT Ms. Joker 51P

Here is a very smooth made yet stout built bull. His extremely good skeleton and deep body give him a very desired look. Being in the top 10 percentile in yearling weight and top 15 percentile in weaning weight, average daily gain and all purpose index.

CE	13	DOC	12.8
BW	-.2	CW	34.0
WW	76	YG	-.12
YW	119	Marb	.28
ADG	-.27	BF	.000
MCE	8	REA	.71
Milk	25	API	142
MWW	60	TI	77
Stay	20		



LOT 94

LHT Mr. Believe 314E

Homo Black Dbl Polled
Purebred
ASA#3315946
BD: 3-7-17
Tattoo: 314E
Adj BW: 88 ET Adj WW: 743

LLSF Pays To Believe ZU194 CNS Pays To Dream T759
LLSF Ura Babydoll U194
BWL Ginger 930Y SVF Steel Force S701
J&C/SS Bernadette

This bull is another good looking son of the Ginger donor. His stout build and deep body are what we look for in bulls. You can't go wrong with this purebred bull.

CE	10	DOC	10.2
BW	2.2	CW	31.7
WW	73	YG	-.40
YW	105	Marb	-.04
ADG	-.20	BF	-.090
MCE	5	REA	.85
Milk	13	API	105
MWW	50	TI	67
Stay	11		





LOT 95

Black Dbl Polled
 3/4 SM 1/4 AN
 ASA#3315907
 BD: 3-31-17
 Tattoo: 280E
 Adj BW: 80 Adj WW: 717

CE	11	DOC	11.8
BW	.7	CW	39.3
WW	67	YG	-.28
YW	113	Marb	.14
ADG	.28	BF	-.058
MCE	6	REA	.82
Milk	23	API	120
MWW	56	TI	68
Stay	16		

LHT Mr. United 280E

LHT Mr. United 57C
 W/C United 956Y
 LHT Ms. Legend 22U
 LHT Ms. Advance 99Y
 LFEBISS Black Advance 426U
 LHT Ms. Deal 51T

Here is a powerhouse of a bull with tons of length of body. He is not one to miss on sale day.



LOT 96

LHT Mr. Answer 50E

Black Dbl Polled
 1/2 SM 1/2 AN
 ASA#3315686
 BD: 1-6-17
 Tattoo: 50E
 Adj BW: 73 Adj WW: 681

S A V Final Answer 0035
 Sitz Traveler 8180
 S A V Emulous 8145
 LHT Ms. Lock N Load 101C
 Remington Lock N Load 54U
 LHT Ms. Hummer 109U

CE	15	DOC	13.1
BW	-1.7	CW	21.8
WW	69	YG	-.14
YW	114	Marb	.32
ADG	.28	BF	-.014
MCE	8	REA	.49
Milk	25	API	146
MWW	59	TI	76
Stay	20		

This bull has been an eye catcher his entire life. This super stout and easy fleshing bull is impressive on paper and pleasing to the eyes. He will sire some attractive and practical calves.

LOT 97

LHT Mr. Executive 244E

Black Dbl Polled
 5/8 SM 3/8 AN
 ASA#3315871
 BD: 3-7-17
 Tattoo: 244E
 Adj BW: 86 Adj WW: 655

W/C Executive Order 8543B
 W/C United 956Y
 LHT Ms. I Mountain 102A
 Miss Werning KP 8543U
 S A V Iron Mountain 8066
 LHT Ms. Dakota 18U

CE	11	DOC	11.3
BW	.7	CW	32.7
WW	76	YG	-.24
YW	120	Marb	.26
ADG	.28	BF	-.055
MCE	6	REA	.62
Milk	20	API	126
MWW	58	TI	75
Stay	15		

Executive Order has done it again with this son that goes back the great Iron Mountain bull. His growth is impressive while still having plenty of calving ease and look.



LOT 98

LHT Miles Of Profit 227E

Black Dbl Polled
 Purebred
 ASA#3262918
 BD: 4-3-17
 Tattoo: 227E
 Adj BW: 88 Adj WW: 909

Profit
 WS Pilgrim H182U
 WAGR Panarama 204Z
 WWS Antoinette 22B
 JF Milestone 999W
 CNS-HFS Antoinette X403

CE	7	DOC	6.7
BW	3.6	CW	19.5
WW	70	YG	-.44
YW	105	Marb	.02
ADG	.22	BF	-.108
MCE	5	REA	.67
Milk	22	API	108
MWW	57	TI	66
Stay	13		

This bull out of the 22B donor definitely got lots of look from his mother. That super long neck, square hip and big top are a hard combination to make, but this bulls puts it all together.

LOT 99

LHT Mr. Lock 288E

Black Polled
 1/2 SM 1/2 CS
 ASA#3317100
 BD: 4-13-17
 Tattoo: 288E
 Adj BW: 81 Adj WW: 742

LHT Mr. Lock N Load 270C
 1325
 Remington Lock N Load 54U
 BWL Ginger 930Y

CE	12	DOC	9.1
BW	.3	CW	15.2
WW	64	YG	-.57
YW	100	Marb	-.10
ADG	.22	BF	-.129
MCE	6	REA	.85
Milk	18	API	97
MWW	50	TI	61
Stay	11		

If only this bull would've been born a little sooner, I'm confident he would have been one of the top bulls on the sale. This april calf has taken off and I predict he will do great things in the future.

LOT 100

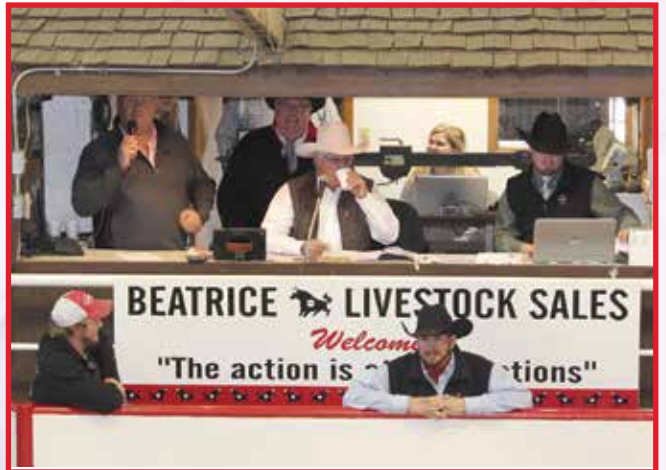
LHT Mr. Broadway 329D

Black Dbl Polled
 3/4 SM 1/4 AN
 ASA#3276209
 BD: 9-9-16
 Tattoo: 329D
 Adj BW: 88 Adj WW: 741

Hook's Broadway 11B
 MCM Top Grade 018X
 LHT Ms. Brand Name 250A
 Hook's Water Lily 89W
 S A V Brand Name 9115
 Ankony Ms. Daumes R57

CE	6	DOC	11.0
BW	3.2	CW	37.6
WW	76	YG	-.32
YW	121	Marb	.12
ADG	.28	BF	-.069
MCE	5	REA	.82
Milk	21	API	109
MWW	59	TI	69
Stay	15		

This rugged made star faced bull is superb in the growth category. Being in the top 15 percentile in weaning weight and the top 10 percentile in yearling weight and average daily gain. This Broadway son will definitely help you pack on the pounds.



Female Sale 2018

SUNDAY
December 9th
12:00 NOON • BEATRICE, NEBRASKA



**SELLING
100 LOTS**
WE LOOK
FORWARD TO
SEEING YOU AT
OUR SALE ON
SUNDAY,
DEC. 9TH IN
BEATRICE, NE!

BID ONLINE AT
LiveAuctionsTV
For more information, call
our support team 800-431-4452

Eberspacher
ENTERPRISES INC.
2904 Co Rd 6, Marshall, MN 56258

First Class Mail: Time Dated Material

To:

FIRST CLASS
U.S. Postage
PAID
Marshall, MN
Permit #86

Trauernicht Simmentals